



KONICA MINOLTA

# Device Set-Up

---

**User's Guide**

---

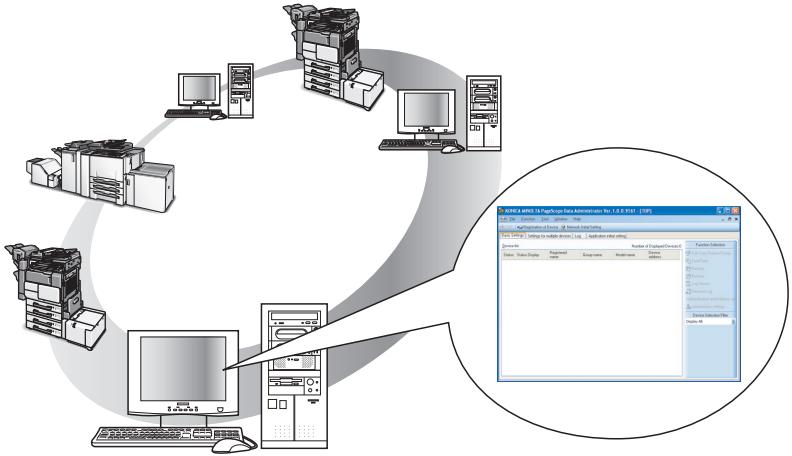
# Contents

<b>About this Product</b> .....	<b>iii</b>
<b>Trademarks</b> .....	<b>iv</b>
<b>1 Getting Started</b>	
<b>1.1 System Requirements</b> .....	<b>1-1</b>
<b>1.2 Overview of Functions</b> .....	<b>1-2</b>
<b>2 Software Installation</b>	
<b>2.1 OpenAPI settings</b> .....	<b>2-1</b>
Installation procedure .....	2-1
<b>2.2 Installation of Device Set-Up</b> .....	<b>2-2</b>
Installation .....	2-2
<b>2.3 Uninstalling</b> .....	<b>2-6</b>
<b>3 How to Use the Device Set-Up</b>	
<b>3.1 Specifying automatic protection settings</b> .....	<b>3-1</b>
Installation procedure .....	3-1
To change settings .....	3-3
<b>3.2 Main Window</b> .....	<b>3-4</b>
Menu Bar .....	3-5
Icon / Tab in main window .....	3-6
<b>4 Device Registration</b>	
<b>4.1 Search for a supported device</b> .....	<b>4-1</b>
Register Found Devices .....	4-1
Registration with the IP address specified .....	4-4
Registration from the Function access restriction file .....	4-6
Registration of the local file .....	4-9
Set the search range .....	4-11
Edit of the device registered .....	4-14
Delete of the device registered .....	4-16
<b>5 Other Functions</b>	
<b>5.1 Network Initial Setting</b> .....	<b>5-1</b>
Initialize the network of the Device .....	5-1

<b>5.2</b>	<b>Export/Import of the Device list .....</b>	<b>5-5</b>
	Export of the device list .....	5-5
	Import of the device list .....	5-7
	Import of the Device list from the previous version .....	5-9
<b>5.3</b>	<b>Function Access Restriction File Settings .....</b>	<b>5-11</b>
	Create a New Function Access Restriction File .....	5-11
	Add a Device to a Function Access Restriction File .....	5-14
	Edit the Function Access Restriction File .....	5-16
	Delete the device information from a Function Access Restriction File .....	5-17
<b>5.4</b>	<b>Group Settings .....</b>	<b>5-18</b>
	Create a New Group .....	5-18
	Edit a Group .....	5-19
	Delete a Group .....	5-20
	Set the Default Group .....	5-21
<b>5.5</b>	<b>LDAP Server Access Settings .....</b>	<b>5-22</b>
	Add LDAP Server Access Settings .....	5-22
	Edit LDAP Server Access Settings .....	5-25
	Delete LDAP Server Access Settings .....	5-25
<b>5.6</b>	<b>Display Option Settings .....</b>	<b>5-26</b>
	Set Display Options .....	5-26
<b>5.7</b>	<b>Displaying the Help .....</b>	<b>5-29</b>
	Displaying the Help .....	5-29
<b>5.8</b>	<b>Displaying the version information .....</b>	<b>5-30</b>
	Procedure .....	5-30

# About this Product

For The Device Set-up, installing the plug-ins allows you to obtain the information of a copier on the network and/or change its settings.



---

## Trademarks

KONICA MINOLTA, the KONICA MINOLTA logo and PageScope are either registered trademarks or trademarks of KONICA MINOLTA, INC.

Active Directory, Microsoft and Windows are either registered trademarks or trademarks of Microsoft Corporation in the United States and/or other countries.

Intel and Pentium are trademarks or registered trademarks of Intel Corporation or its subsidiaries in the United States and other countries.

Microsoft® and Windows® are either registered trademarks or trademarks of Microsoft Corporation in the United States and/or other countries.

All other product names are trademarks or registered trademarks of their respective companies.

### Dialog boxes



...

#### **Note**

*The dialog boxes that appear in this document may differ from those that appear on your PC, depending on the installed devices, specified settings, and PC that you are using.*



...

#### **Note**

*Unauthorized reproduction, translation or duplication of this document, whether in its entirety or in part, is strictly prohibited.*

*The content of this document is subject to change without notice.*

*Copyright © 2007 KONICA MINOLTA, INC. All rights reserved.*

# 1 Getting Started

## 1.1 System Requirements

Systems must have the following specifications in order to use this software.

Operating System	Windows Vista Enterprise (SP2 or later)* Windows Vista Business (SP2 or later)* Windows Vista Ultimate (SP2 or later)* Windows 7 Enterprise (SP1 or later)* Windows 7 Professional (SP1 or later)* Windows 7 Ultimate (SP1 or later)* Windows 8.1 Pro * Windows 8.1 Enterprise * Windows 10 Pro * Windows 10 Enterprise * Windows 10 Education * * 32-bit(x86) and 64-bit(x64) editions are supported.
Computer	According to the recommended system requirements of your operating system.
Memory (RAM)	According to the recommended system requirements of your operating system.
Unused hard drive capacity	100 MB or more
Display	800 × 600 pixel, 16 bit - color or better
Network	TCP/IP protocol
Web browser	Microsoft Internet Explorer The latest version supported by each OS.
Libraries	Microsoft .NET Framework: Both of the following versions are required. <ul style="list-style-type: none"> <li>• .NET Framework 3.5 (SP1 or later)</li> <li>• .NET Framework 4.5 or later</li> </ul> <p>* If you are using Windows 8.1 or Windows 10, install .NET Framework 3.5 separately with the following procedures.</p> <ol style="list-style-type: none"> <li>1. Open [Control Panel], and then click [Programs] - [Programs and Features] - [Turn Windows features on or off].</li> <li>2. Select the “.NET Framework 3.5 (includes .NET 2.0 and 3.0)” check box, and click [OK].</li> <li>3. Complete the installation according to the instructions shown.</li> </ol>
Supported Devices	For details of the copier and the printer (supported device of the plug-in application), see the Readme of each plug-in application.

Refer to the Readme file for the latest information about the operating environment.

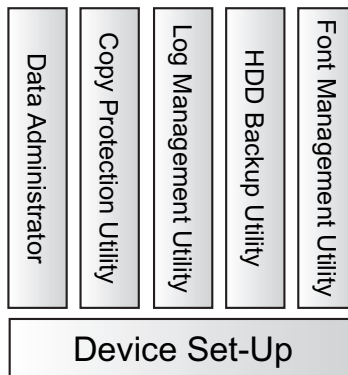
**Note**

*In order to use this software, it is necessary to enable OpenAPI from the device panel by selecting Administration Settings, then System.*

## 1.2 Overview of Functions

For The Device Set-up, installing the following plug-ins allows you to obtain the information of a copier on the network and/or change its settings.

Plug-in	Description
PageScope Data Administrator	PageScope Data Administrator is an administration tool with which authentication data and addresses that are registered in the control panel of supported devices (multifunctional OA equipment) can be edited and changed from other computers on the network.
HDD Backup Utility	HDD Backup Utility is used to back up (save) and restore (re-cover) information on media installed in multifunctional products (MFP) on the network.
Log Management Utility	Log Management Utility accesses MFP products on the network, and displays log files (operations and processing records that include monitoring logs and communications history) stored on these devices. These can be used in management of device usage status, and in troubleshooting.
Font Management Utility	Font Management Utility is a utility that allows you to add and delete the fonts and the forms for printing of the supported devices (MFPs) that are on a network.
Copy Protection Utility	Copy Protection Utility is used to program multifunctional products with copy protection and stamp information.



## 2 Software Installation

### 2.1 OpenAPI settings

Some plug-in applications use OpenAPI. On an occasion like this, it is necessary to make a write setting in advance on the device side.

#### Installation procedure

Before installing the Device Set-Up, specify the OpenAPI settings on the device.

- Specify the OpenAPI Login Name and password from the control panel of the device as necessary.
  - For details on the procedure for specifying the OpenAPI settings from the control panel of the device, refer to the device's User's Guide.



#### **Note**

*Follow the instructions in the User's Guide for the device to specify the settings for SSL transmission.*



## 2.2 Installation of Device Set-Up

Install the Device Set-Up as follows:



### Note

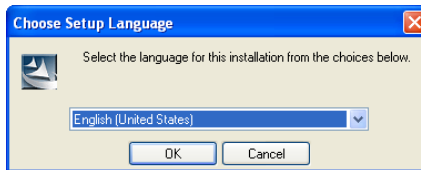
*When installing the Device Set-Up, the Microsoft .NET Framework is required to have been installed in advance.*

*The version of Microsoft .NET Framework is based on the OS to be used. Refer to page 1-1 for details.*

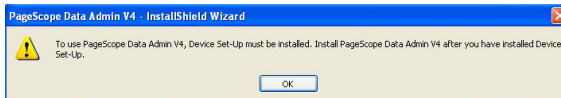
*Before installing the utility, be sure to log in with Administrator privileges. Quit all applications (including virus detection programs) that are running.*

### Installation

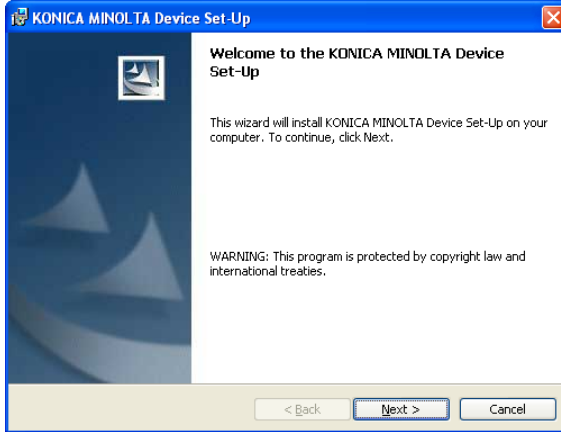
- 1 Double-click the **Setup.exe** of the plug-in application you want to install.
- 2 Select language and click [OK].



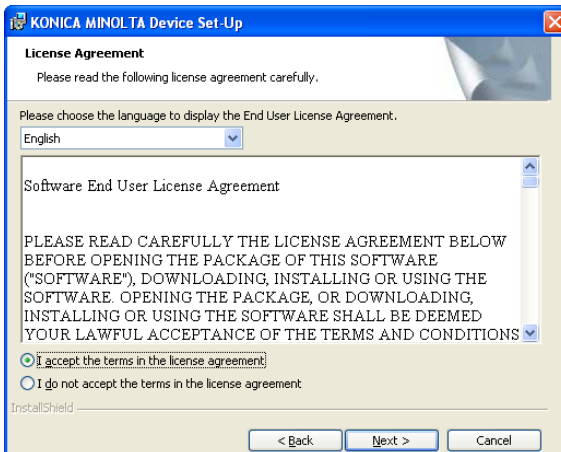
- 3 Before installing the plug-in application, a message is displayed informing that the Device Set-Up will be installed. When the message is displayed, click [OK].



## 4 Click [Next].

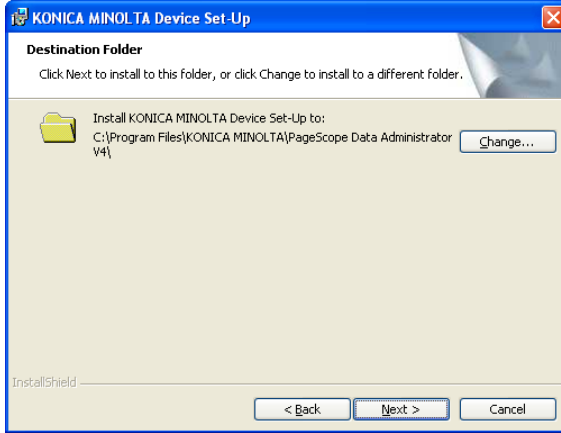


## 5 When you consent to the Software End User License Agreement, select [I accept the terms in the license agreement] and then click [Next].



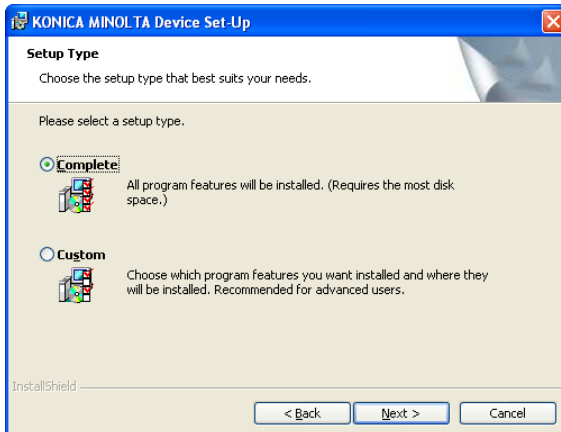
- When you do not consent to the Software End User License Agreement, you cannot use this software.

## 6 Specify a folder into which it is installed, and click [Next].



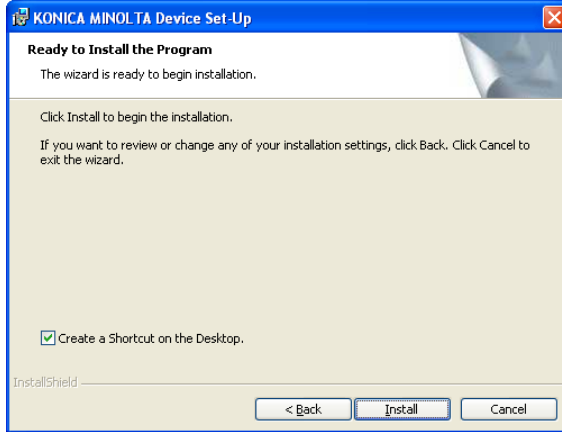
- When changing the location into which an installation is made, click [Change] to specify the location into which it is installed.
- When no change is made to the location into which an installation is made, an installation is made into the C:\Program Files\KONICA MINOLTA\PageScope Data Administrator V4 folder.

## 7 Select setup type and then click [Next].



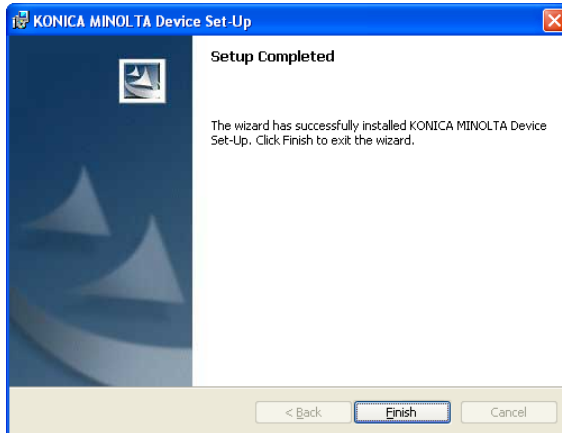
- When selecting [Complete], all program features will be installed.
- When selecting [Custom], select which program features you want installed and where they will be installed.

## 8 Click [Install].



- When specifying [Create a Shortcut on the Desktop], shortcut is created on the desktop.

## 9 Click [Finish].



The installation is completed.  
In addition, install the plug-in application.  
For details of the procedure for installation of the plug-in application,  
see respective User's Guides.

## 2.3 Uninstalling

The uninstallation method of Device Set-Up is as follows.

- Using “Programs and Features” in “Control Panel”



**Note**

*Before uninstalling, quit the Device Set-Up.*

## 3 How to Use the Device Set-Up

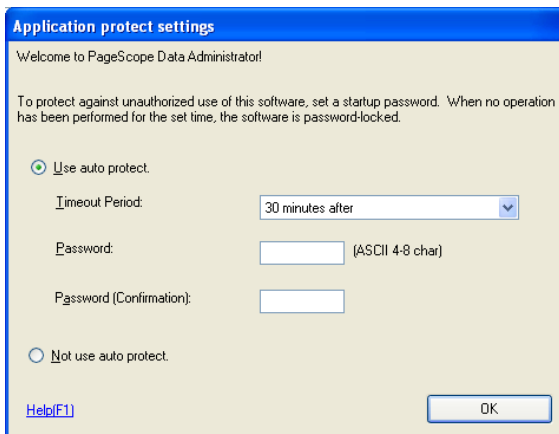
The following procedure describes how to specify the necessary settings when the Device Set-Up is first started.

### 3.1 Specifying automatic protection settings

In order to prevent unauthorized use of the application, an access password and timeout time can be specified. If the length of time that no operation is performed in this utility exceeds the specified timeout time, the application is automatically locked. The application can be unlocked if the access password is entered.

#### Installation procedure

- 1 From the Windows Start menu, start the Device Set-Up.
  - Click the Windows [Start] - [All Programs] - [KONICA MINOLTA] - [Device Set-Up] - [Device Set-Up].The Application protect settings dialog box appears.
- 2 Select [Use auto protect].
- 3 To use automatic protection, specify the [Timeout Period] and the [Password].
  - After the first time that the utility is started, this dialog box does not appear. Instead, the main window appears.



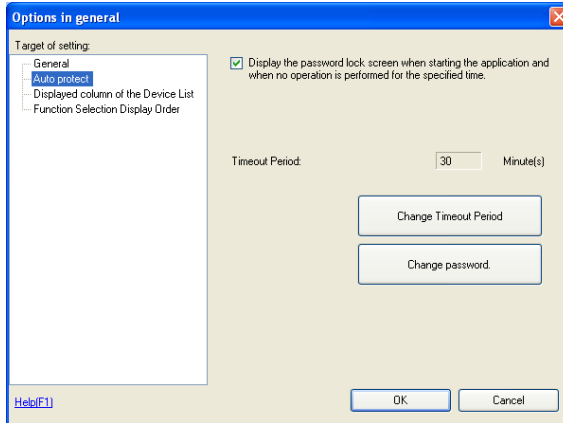
4 Click [OK].

The automatic protection settings are applied, and the main window appears.

## To change settings

Automatic protection settings can be changed using the menu above the main window.

- 1 Click [Tool] from menu and select [Option] - [General].
- 2 Select [Auto protect] in [Target of setting] field.

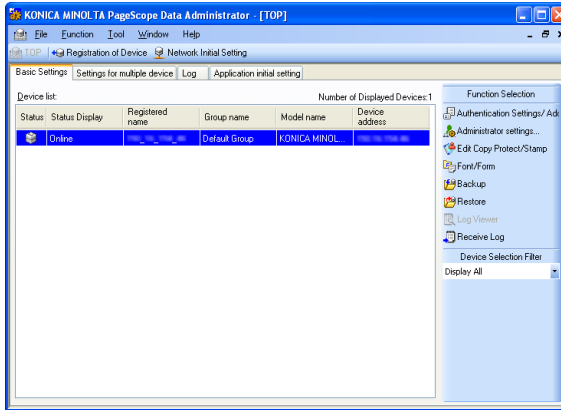


- 3 Change the Auto protect settings, and then click [OK].
  - To turn off automatic protection, clear the check box.
  - To change the timeout time, click [Change Timeout Period], and then change the setting.
  - To change the access password, click [Change password], and then change the password.The changes are applied to the settings, and the main window appears.



## 3.2 Main Window

When the Device Set-up is started, the Main window is displayed.



### Note

*The screen above shows the condition in which individual plug-ins are installed. The screen displayed may vary depending on a plug-in installed.*

*For the Device Set-up, the operations such as search, registration and edit of a copier (supported device) on the network are conducted through this screen.*



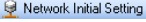
*For other functions, it is necessary to install each particular plug-in. For detailed functions of individual plug-ins, refer to the respective user's guides.*

## Menu Bar

Menu		Explanation	
File	Device List	The import/export of the Device list is made.	
	Exit	Close the application.	
Function	Edit Copy Protect/Stamp	This can be used when the Copy Protection Utility plug-in is installed.	
	Font/Form	This can be used when the Font Management Utility plug-in is installed.	
	HDD Backup	This can be used when the HDD Backup Utility plug-in is installed.	
	Restore	This can be used when the HDD Backup Utility plug-in is installed.	
	Log Viewer	This can be used when the Log Management Utility plug-in is installed.	
	Receive Log	This can be used when the Log Management Utility plug-in is installed.	
	Authentication Settings/Address settings	This can be used when the PageScope Data Administrator plug-in is installed.	
	Administrator settings	This can be used when the PageScope Data Administrator plug-in is installed.	
	Settings for multiple devices	Individual functions are collectively handled.	
	Log	This can be used when the Log Management Utility plug-in is installed.	
	Application initial setting	The files set are saved locally with no connection made to the device.	
Tool	Option	The optional functions of each plug-in are set.	
	Device	Registration of Device	Start device registration.
		Edit registered group	Start group settings.
		Network initial setting	Configure default settings for the registered device network.
	LDAP server settings	Configure LDAP server settings.	
	Function access restriction	New	Create a function access restriction file.
Open		Open an existing function access restriction file.	

Menu		Explanation	
Window	Display	Top screen display	Top screen is displayed.
		Access history display	The screen for the access history display is displayed.
	Cascade view		Display screens cascaded inside the main window.
	Tile Horizontal		Display screens inside the main window tiled horizontally.
	Tile Vertical		Display screens inside the main window tiled vertically.
Help	Help	Display Help.	
	Version information	Display the version of Device Set-Up.	

### Icon / Tab in main window

Icon / Tab	Explanation
 TOP	The screen registered as a top screen is displayed.
 Registration of Device	The registration of the Device is started.
 Network Initial Setting	The network of the registered device is initialized.
Basic Settings tab	The Device list is displayed. It is also possible to select a function from [Function Selection] to the right of the screen.
Settings for multiple devices tab	Individual functions are collectively processed. The display may vary depending on a plug-in installed.
Log tab	The log management is made. For this operation, the Log Management Utility is required to be installed in advance.
Application initial setting tab	The files set are saved locally with no connection made to the device.
Function Selection	It is possible to select a function that can be used. The Device Selection Filter allows you also to list up devices that are provided with supported functions.

## 4 Device Registration

The Device Set-up allows you to search and register a supported device on the network. For the supported device registered, various settings can be made for each plug-in.

### 4.1 Search for a supported device

As a method for the search/registration of a supported device, the following are available.


- Method for searching a supported device on the network
- Method for searching a supported device with the IP address specified.
- Method for registering a supported device from the Function access restriction file
- Method for registering a local file

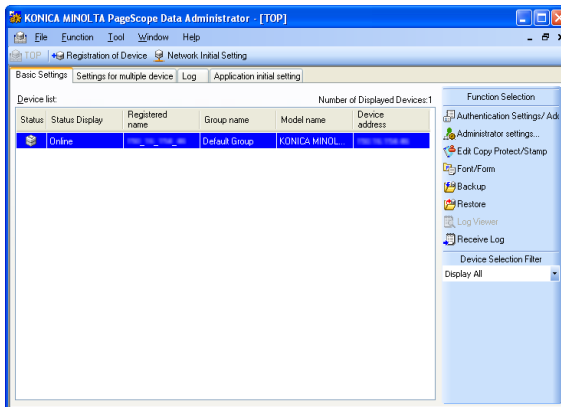


#### Detail

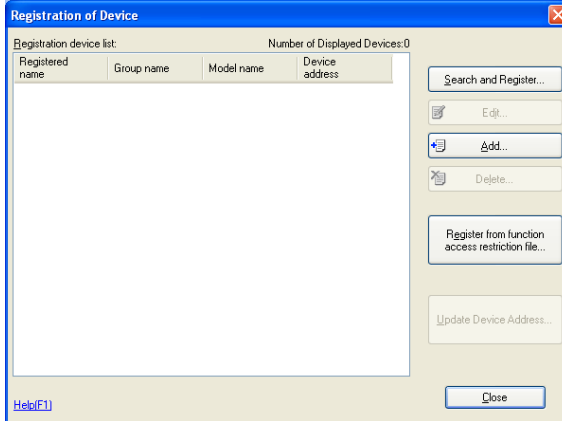
*When making a search for a device on the network, it is also possible to set the range of search.*

### Register Found Devices

- 1 Start the Device Set-Up to display main window.
  - For details of the method for displaying the main window, refer to page 3-1.
- 2 Click  Registration of Device .

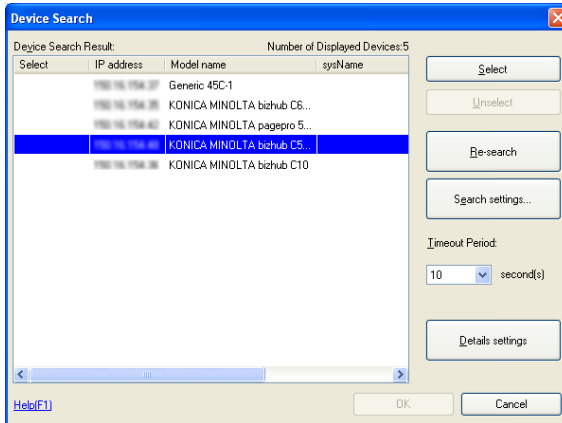


### 3 Click [Search and Register].



Device Search Result list appears.

### 4 Select the devices to register and click [Select].



– When a search for a device is made again, click [Re-search].

### 5 Click [OK].

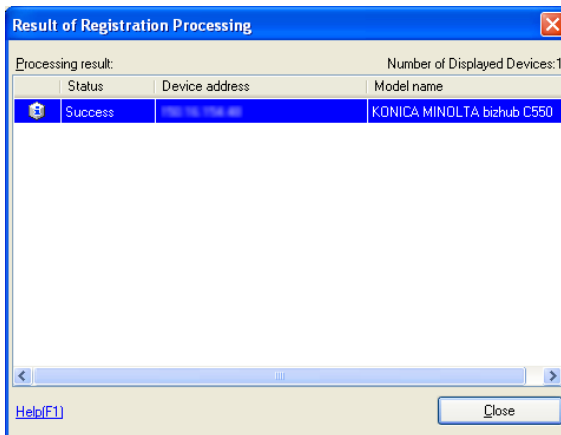
- 6 When the administrator password of the device is required to be entered, enter the password and then click [OK].



The dialog box is titled "Administrator Password Batch Setting". It contains the following elements:

- A message: "You can set the same Administrator Password for all specified devices."
- A checked checkbox: "Save the administrator password."
- Two text input fields: "Administrator password:" and "Administrator password (Confirmation):".
- A "Help(F1)" link at the bottom left.
- "OK" and "Cancel" buttons at the bottom right.

- 7 Click [Close] in Result of Registration Processing window.



The dialog box is titled "Result of Registration Processing". It displays the following information:

- Processing result: Success
- Number of Displayed Devices: 1
- A table with the following data:
 

Status	Device address	Model name
Success	192.168.1.100	KONICA MINOLTA bizhub C550
- A "Help(F1)" link at the bottom left.
- A "Close" button at the bottom right.

- 8 Click [Close].  
The devices are registered.




#### Note

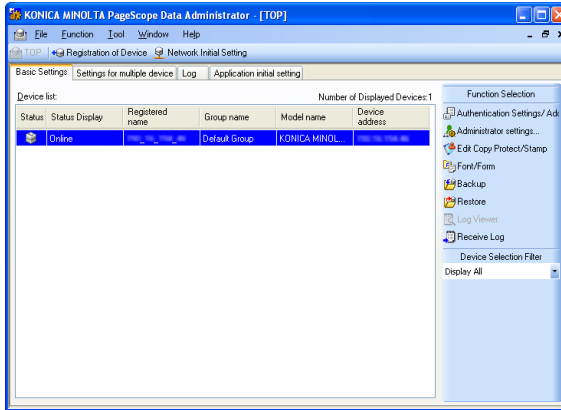
*It sometimes takes more than two minutes before the device registered is displayed in the Device list on the main window.*

#### **When the device cannot be searched:**

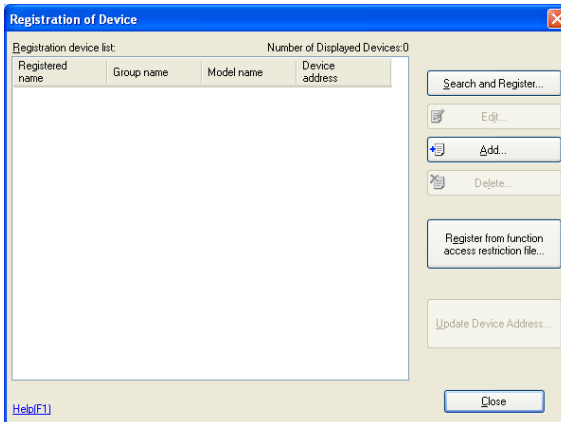
*There is a possibility that this is not set as "Exceptions program" while in the setting of the firewall. Set this application as "Exceptions program" while in the setting of the firewall for the network setting of the PC.*

## Registration with the IP address specified

- 1 Start the Device Set-Up to display main window.
  - For details of the method for displaying the main window, refer to page 3-1.
- 2 Click  Registration of Device .



- 3 Click [Add].



- 4 Enter the IP address in [Device address] text box and click [OK].

- 5 Check the contents in Edit device information window and click [OK].

- 6 Click [Close].

The devices are registered.




**Note**

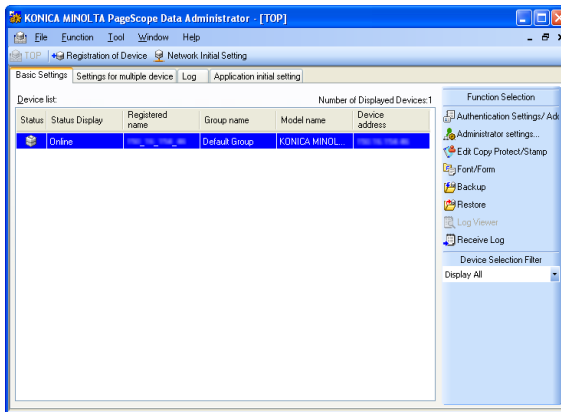
*It sometimes takes more than two minutes before the device registered is displayed in the Device list on the main window.*



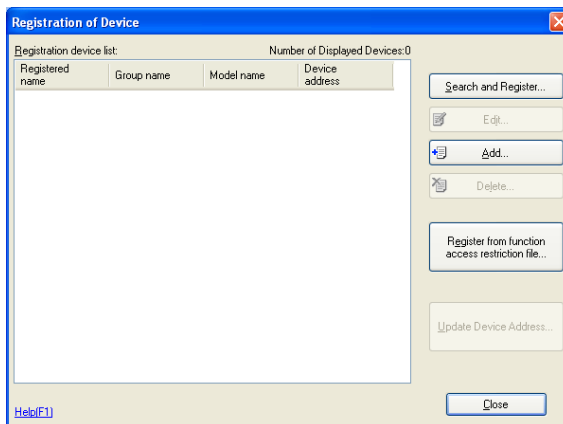
## Registration from the Function access restriction file

It is possible to register a supported device from the Function access restriction file that has been written in advance. For details of the creation of the Function access restriction file, refer to page 5-11.

- 1 Start the Device Set-Up to display main window.
  - For details of the method for displaying the main window, refer to page 3-1.
- 2 Click  Registration of Device .



- 3 Click [Register from function access restriction file].

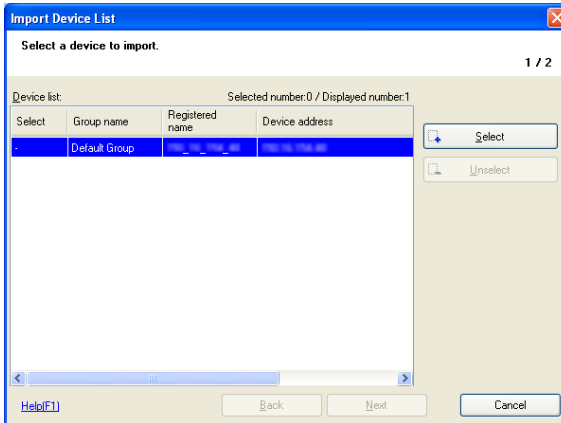


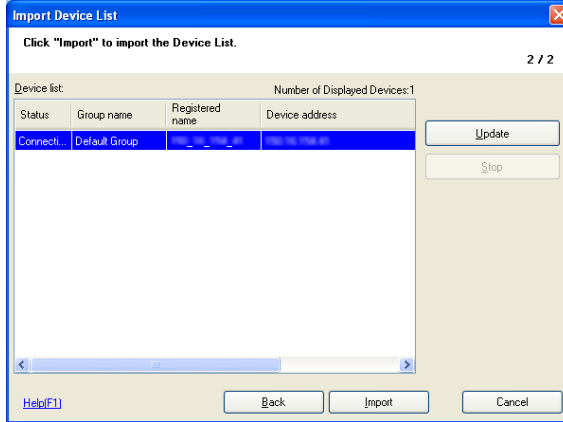
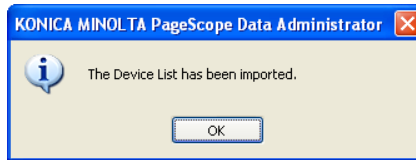
- 4 Select “Function access restriction file” and click [Open].

- 5 Enter the decryption password and click [OK].



- 6 When the release confirmation screen of the access restriction is displayed, click [Yes].
- 7 Enter the password and click [OK].
- 8 Select device to import by clicking [Select] and click [Next].



**9** Click [Import].**10** Click [OK].

The devices are registered.

**Note**

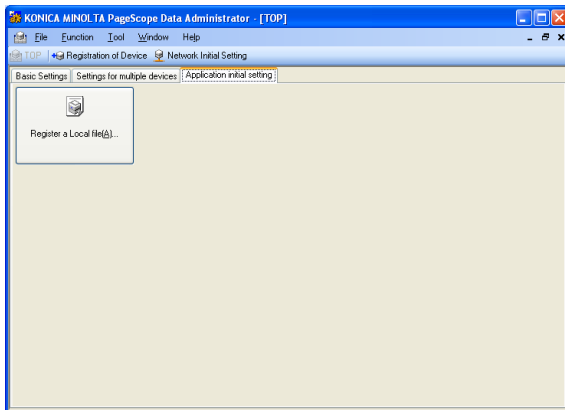
*It sometimes takes more than two minutes before the device registered is displayed in the Device list on the main window.*

## Registration of the local file

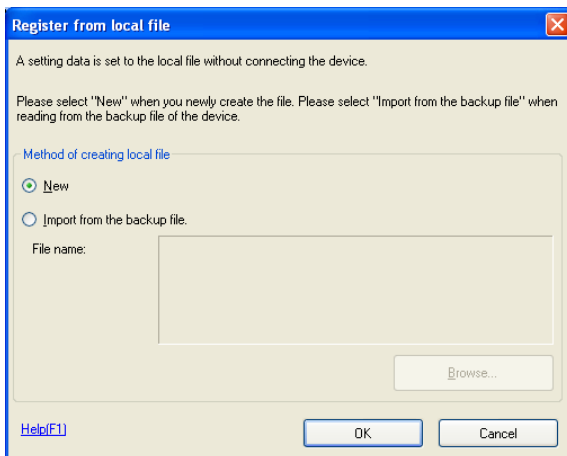
The setting information created in the local file is registered with no connection made to the device.

- ✓ When registering a local file, the PageScope Data Administrator is required to have been installed in advance.

- 1 Start the Device Set-Up to display main window.
  - For details of the method for displaying the main window, refer to page 3-1.
- 2 Click [Application initial setting] tab and select [Register a Local file].



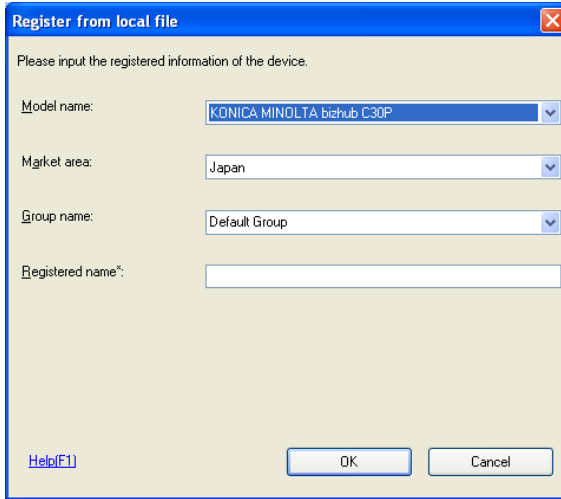
- 3 Click [New].



- When reading a backup file, select [Import from the backup file], click [Browse] and then specify the backup file.

4 Click [OK].

5 Enter all informations and click [OK].



The screenshot shows a dialog box titled "Register from local file" with a close button (X) in the top right corner. The main text reads "Please input the registered information of the device." Below this, there are four fields:

- Model name:** A dropdown menu showing "KONICA MINOLTA bizhub C30P".
- Market area:** A dropdown menu showing "Japan".
- Group name:** A dropdown menu showing "Default Group".
- Registered name\*:** An empty text input field.

At the bottom left, there is a "Help(F1)" link. At the bottom right, there are "OK" and "Cancel" buttons.

6 When a device is selected that requires option setting, specify option setting and click [OK].



The screenshot shows a dialog box titled "Device option setting". It contains two sections:

- Authentication setting option:** A dropdown menu for "Authentication Device Settings" showing "None".
- Address setting option:** Three radio button options:
  - Use SIP Fax
  - Use IP Address Fax
  - Not use both of them


An "OK" button is located at the bottom center of the dialog box.

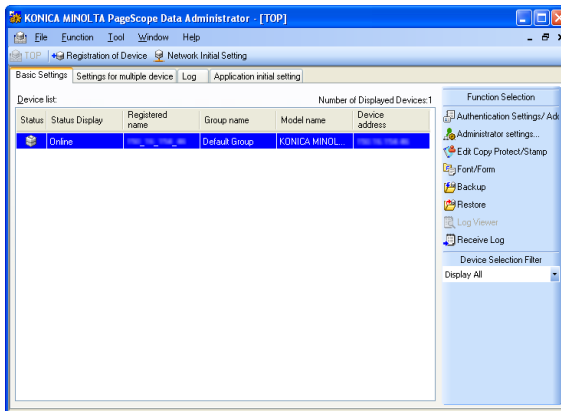
7 When the confirmation message is displayed, click [OK].  
The devices are registered.

**Note**

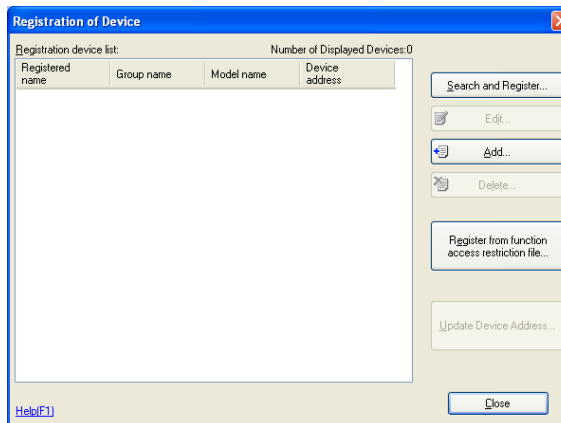
*It sometimes takes more than two minutes before the device registered is displayed in the Device list on the main window.*

**Set the search range**

- 1 Start the Device Set-Up to display main window.
  - For details of the method for displaying the main window, refer to page 3-1.
- 2 Click  Registration of Device .

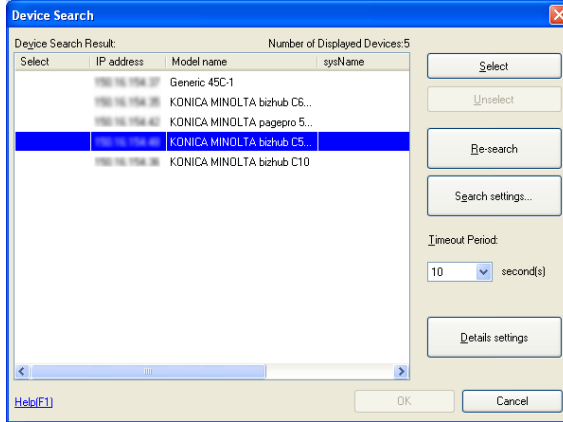


- 3 Click [Search and Register].



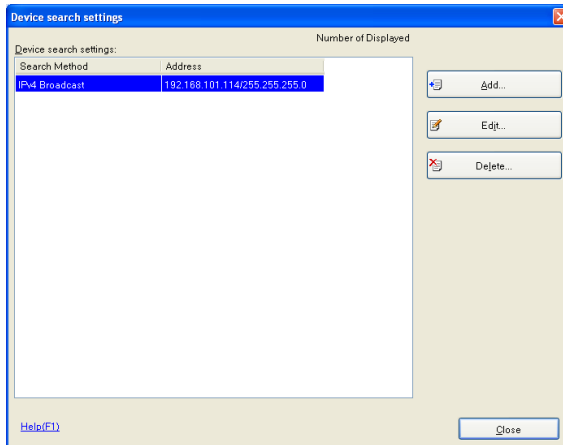
Device Search Result list appears.

#### 4 Click [Search settings].



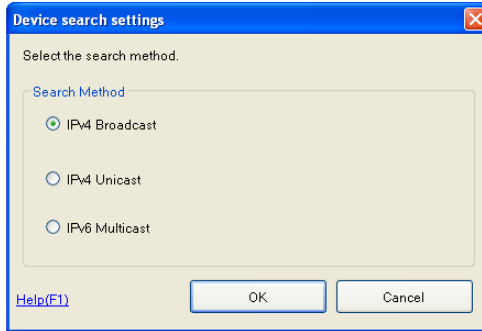
- Details settings:  
For a device search, specify the priority in registering the device address. The priority thus specified here is applicable when the device address is updated in [Update Device Address].

#### 5 Click [Add].

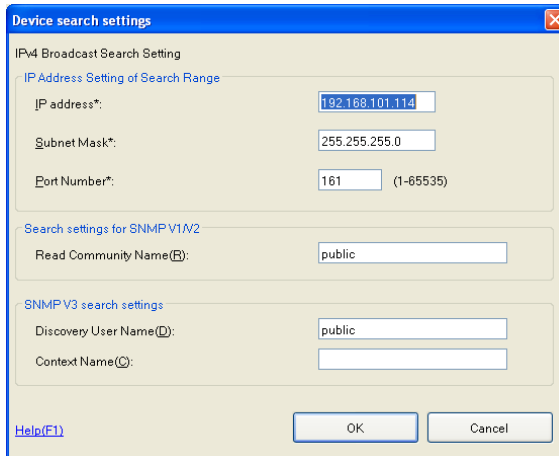


- When a change is made to the search settings that have been registered, click [Edit].
- When deleting the search settings that have been registered, click [Delete].

- 6 Select search method and click [OK].




- 7 After setting the IP address, subnet mask, port No. and SNMP V1/V2/V3 of the search range, click [OK].

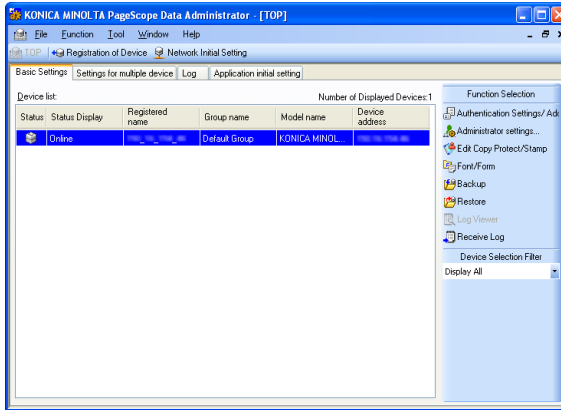


- 8 Select the search settings to be added and click [Close]. The search settings are set.
- When a search is made with the search settings that have been set, click [Re-search].

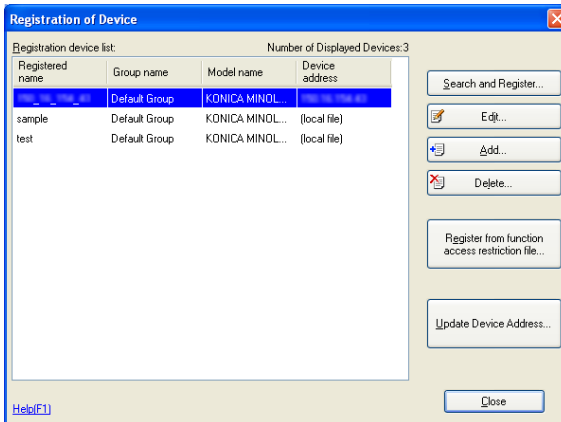


## Edit of the device registered

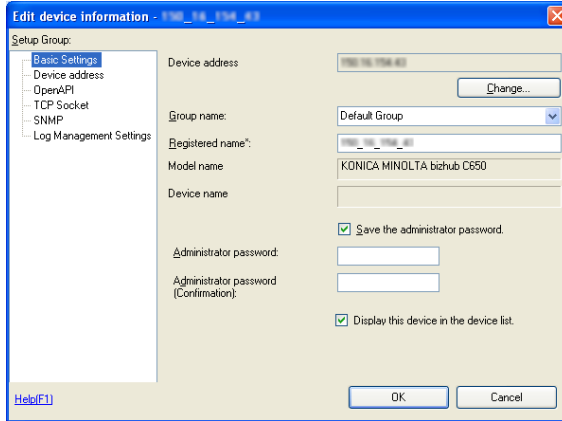
- 1 Start the Device Set-Up to display main window.
  - For details of the method for displaying the main window, refer to page 3-1.
- 2 Click  Registration of Device .



- 3 Select the device to edit from the list and click [Edit].




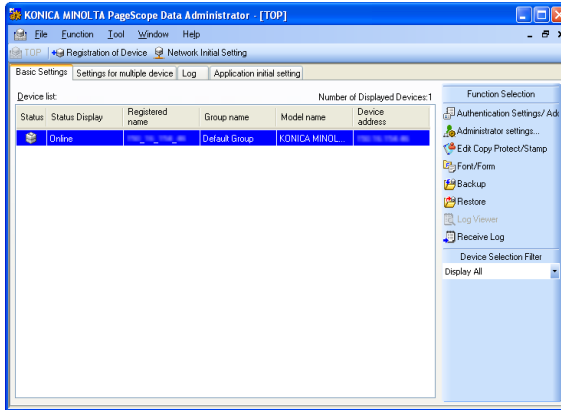
#### 4 Change setting and click [OK].



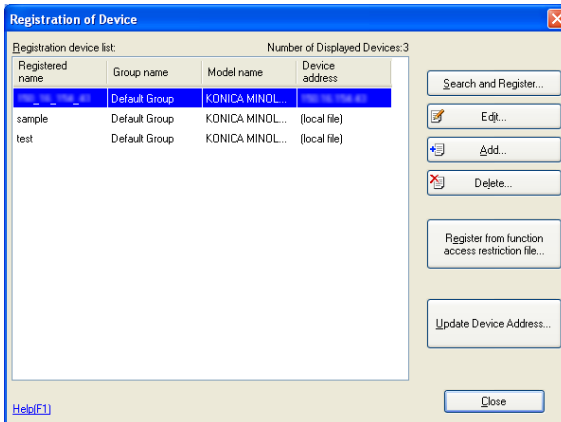
The registration information is edited.

## Delete of the device registered

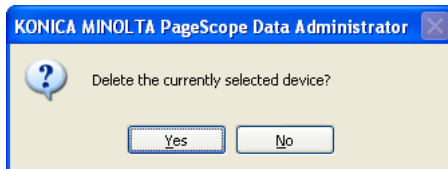
- 1 Start the Device Set-Up to display main window.
  - For details of the method for displaying the main window, refer to page 3-1.
- 2 Click  Registration of Device .



- 3 Select the device to delete from the list and click [Delete].



- 4 When the confirmation message is displayed, click [OK].



The registration information is deleted.

## 5 Other Functions


For the Device Set-up, the setting of the following can be made other than the registration of the supported device.

- Network Initial Setting
- Import/Export of device list
- Group setting
- The setting of function access restriction file
- LDAP server settings
- Options settings

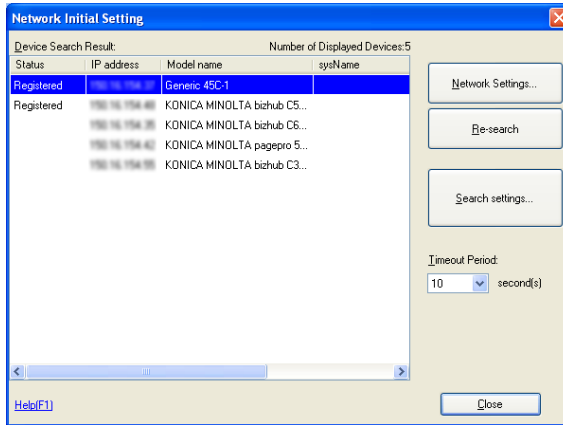
### 5.1 Network Initial Setting

Search a device on the network and then initialize the network.

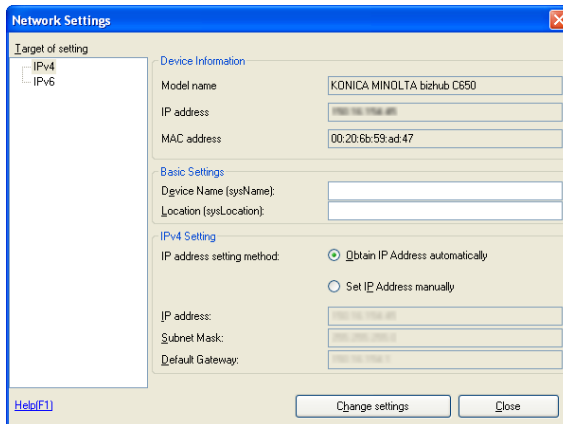
#### Initialize the network of the Device

- 1 Start the Device Set-Up to display main window.
  - For details of the method for displaying the main window, refer to page 3-1.
- 2 Click  Network Initial Setting .
  - When the search range of the Device is not yet set, click [Search settings] to add the search range. For details of the search range setting, refer to page 4-11.
  - A search for devices is started. And devices that have been searched are displayed in the list of the network initialization screen.

- 3 Select devices from the list for which to configure network default settings, and click [Network Settings].



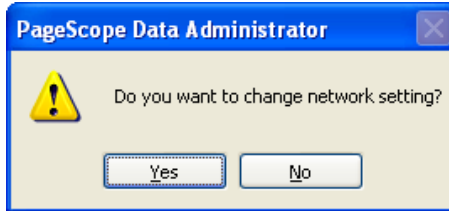
- 4 Set required items, and click [Change settings].



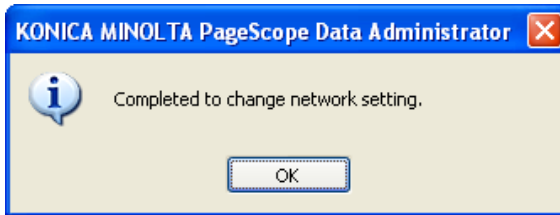
- Device Information:  
Displays currently set device Model name, IP address, and MAC address settings.
- Device Name (sysName): Input the device name.
- Location (sysLocation):  
Input the location where the device is installed.
- Obtain IP Address automatically:  
Select this to have the device IP address automatically set by the DHCP server.

- Set IP Address manually:  
Select this to enable the following text boxes, enabling specification of device IP addresses.
- IP address: Input the IP address of the device.
- Subnet Mask: Input the Subnet mask of the device.
- Default Gateway: Input the default gateway of the device.

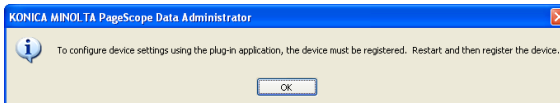
5 When the confirmation message is displayed, click [Yes].



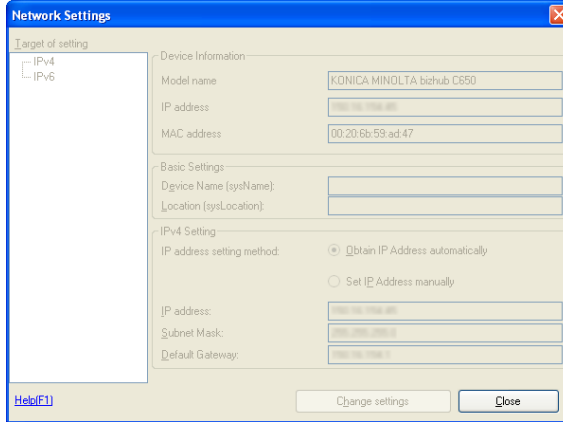
6 Click [OK].



7 Click [OK].



## 8 Click [Close].



### Detail

*Configuring network default settings in itself does not allow administration of devices using Device Set-Up. In order to administrator devices, first register them with Device Set-Up. For details, please refer to “Device Registration” on page 4-1.*

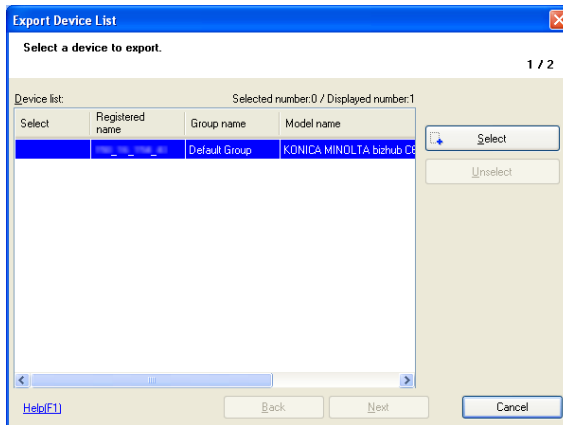


## 5.2 Export/Import of the Device list

For the Device Set-up, it is possible to import/export the Device list.

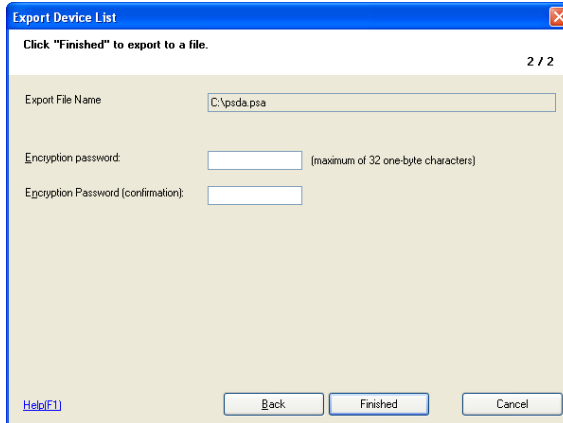
### Export of the device list

- 1 Start the Device Set-Up to display main window.
  - For details of the method for displaying the main window, refer to page 3-1.
- 2 Select [Device list] - [Export] from the [File] menu.
- 3 Enter the name of a file to be exported, specify a location into which the file is saved and then click [Save].
- 4 Select the device to export from the list and click [Select].



- 5 Click [Next].

- 6 Enter the Encryption password and click [Finished].



Export Device List

Click "Finished" to export to a file. 2 / 2

Export File Name: C:\psda.psa

Encryption password: (maximum of 32 one-byte characters)

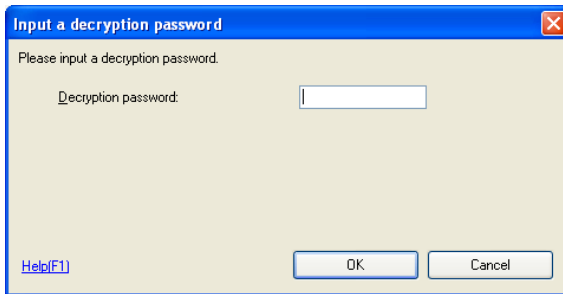
Encryption Password (confirmation):

Help(F1) Back Finished Cancel

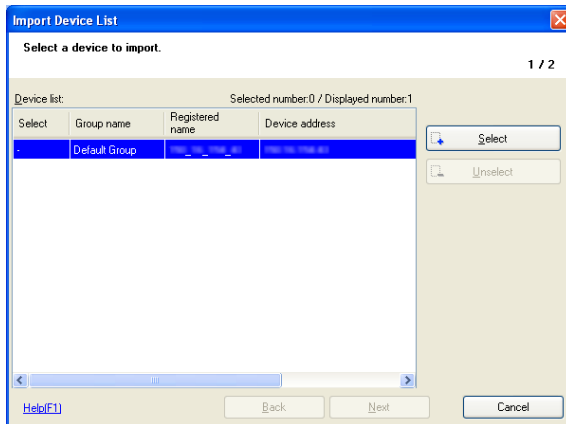
- 7 When the confirmation message is displayed, click [OK].  
The Device list is exported. (Extension: psa)

### Import of the device list

- 1 Start the Device Set-Up to display main window.
  - For details of the method for displaying the main window, refer to page 3-1.
- 2 Select [Device list] - [Import] from the [File] menu.
- 3 Select the file to import and click [Open].
- 4 Enter the Decryption password and click [OK].



- 5 Select the device to import from the list and click [Select].

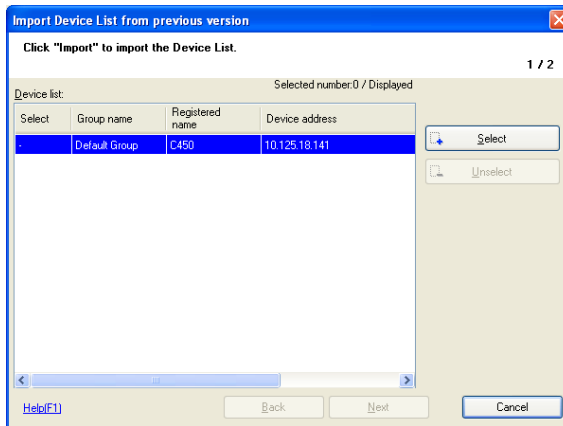


- 6 Click [Next].
- 7 Click [Import].
  - When [Connection OK] is not displayed, click [Update].

- 8 When the confirmation message is displayed, click [OK].  
The Device list is imported.

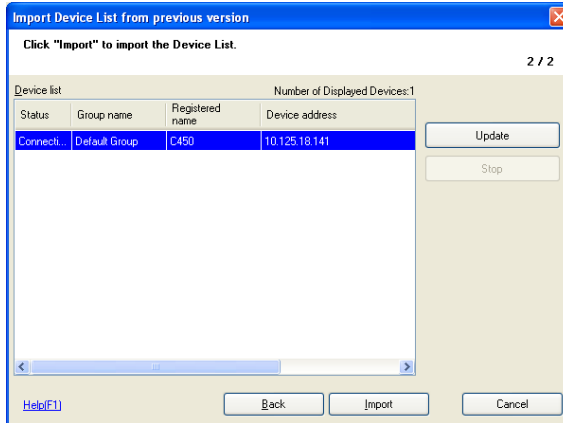
## Import of the Device list from the previous version

- 1 Start the Device Set-Up to display main window.
  - For details of the method for displaying the main window, refer to page 3-1.
- 2 Select [Device list] - [Import from previous version] from the [File] menu and select the tool of one of the old versions as shown below.
  - Copy Protection Utility
  - Font Management Utility
  - HDD Backup Utility
  - Log Management Utility
  - PageScope Data Administrator
- 3 Select the device to import from the list and click [Select].



- 4 Click [Next].

## 5 Click [Import].



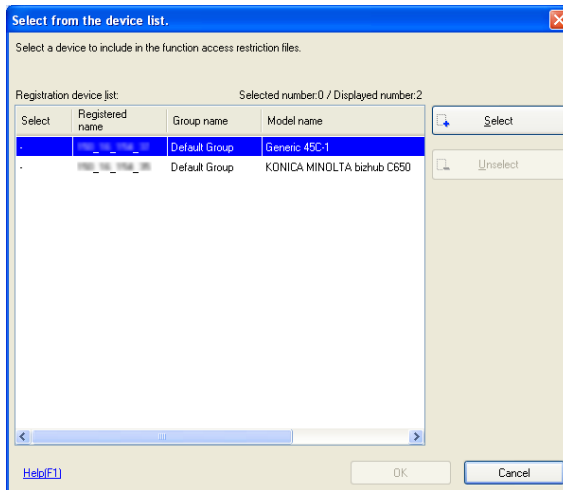
- Clicking [Update] updates the condition of the Device list.
  - Clicking [Stop] stops updating the condition of the Device list.  
The reading of the condition of the Device list into Device lists is made only for those in the [Connection OK] status.
- The device list of the previous version is read.

## 5.3 Function Access Restriction File Settings

Register a device in a function access restriction file. Use of a function access restriction file means that some device functions (address settings, etc.) can be configured without the input of an administrator password.

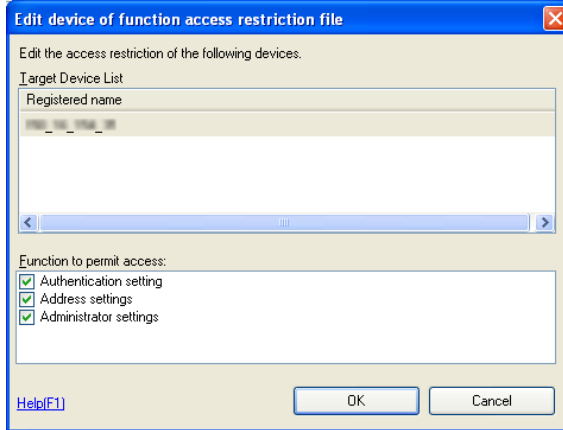
### Create a New Function Access Restriction File

- 1 Start the Device Set-Up to display main window.
  - For details of the method for displaying the main window, refer to page 3-1.
- 2 Select [Function access restriction] - [New] from the [Tool] menu.
- 3 Select the device to set the function access restriction file from the list and click [Select].



- 4 Click [OK].

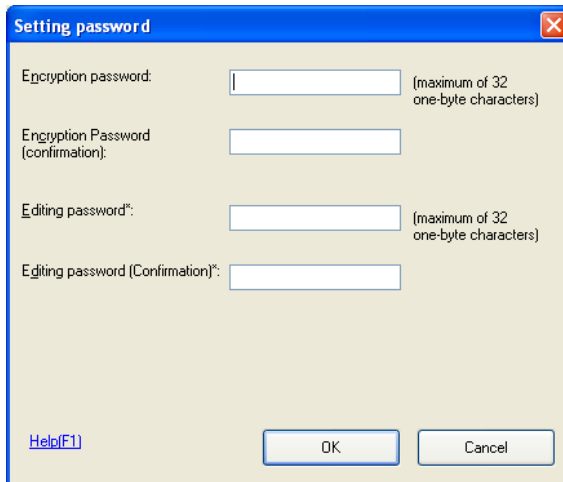
- 5 Configure the function access restriction file, and click [OK].



- Authentication setting:  
Select this to allow access to authentication settings.
- Address settings: Select this to allow access to address settings.
- Administrator settings:  
Select this to allow access to administrator settings.

- 6 Click [Name and Save], specify the location into which the file is saved, and then click [Save].

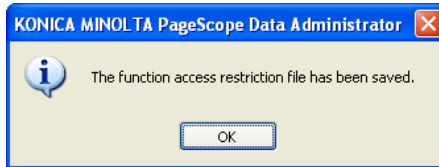
- 7 Set the Encryption password and Editing password, and click [OK].





- Encryption password:  
Input the password to use to open the function access restriction file.
- Encryption password (Confirmation):  
Retype the password for confirmation.
- Editing password:  
Input the editing password to use to edit the function access restriction file.
- Editing password (Confirmation):  
Retype the editing password for confirmation.

8 Click [OK].



The function access restriction file is saved.

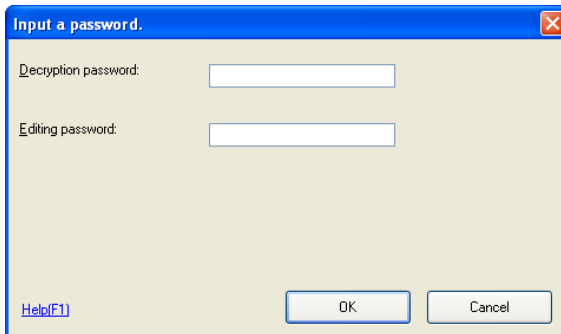


**Detail**

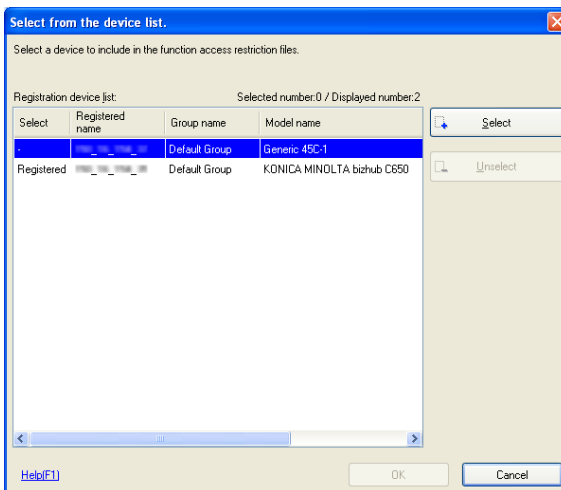
*Refer to p. 4-6 for more information about registration from function access restriction file.*

### Add a Device to a Function Access Restriction File

- 1 Start the Device Set-Up to display main window.
  - For details of the method for displaying the main window, refer to page 3-1.
- 2 Select [Function access restriction] - [Open] from the [Tool] menu.
- 3 Select the function access restriction file to add a device and click [Open].
- 4 Enter the Decryption password, Editing password and click [OK].



- 5 Click [Select Device].
- 6 Select the device to add from the list and click [Select], and click [OK].

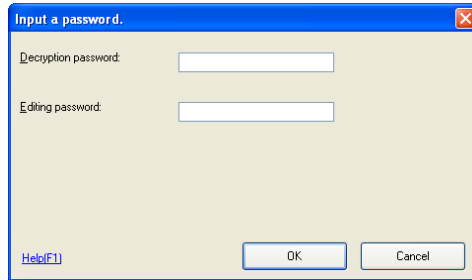


- 7 Click [Close].
  - Click [Edit] to set the function access restriction file as necessary
- 8 Click [Name and Save].

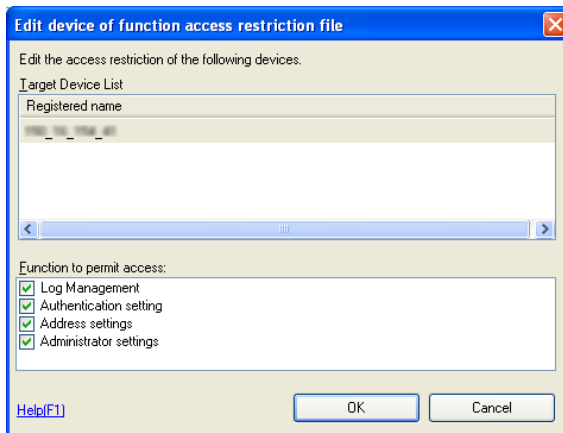
The function access restriction file device is added.

## Edit the Function Access Restriction File

- 1 Start the Device Set-Up to display main window.
  - For details of the method for displaying the main window, refer to page 3-1.
- 2 Select [Function access restriction] - [Open] from the [Tool] menu.
- 3 Select the function access restriction file to edit and click [Open].
- 4 Enter the Decryption password, Editing password and click [OK].



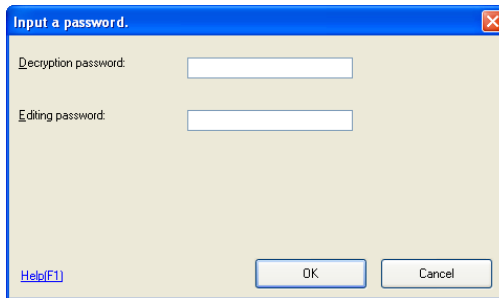
- 5 Select the device to edit and click [Edit].
- 6 Configure the function access restriction file, and click [OK].



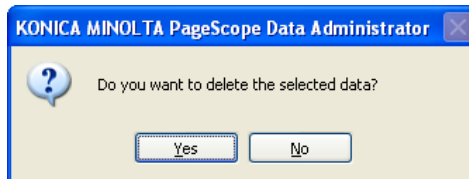
- 7 Click [Name and Save].  
The function access restriction file is edited.

**Delete the device information from a Function Access Restriction File**

- 1 Start the Device Set-Up to display main window.
  - For details of the method for displaying the main window, refer to page 3-1.
- 2 Select [Function access restriction] - [Open] from the [Tool] menu.
- 3 Select the function access restriction file to delete and click [Open].
- 4 Enter the Decryption password, Editing password and click [OK].



- 5 Click [Delete].
- 6 When the confirmation message is displayed, click [Yes].



The device information is deleted from a function access restriction file.

- 7 Click [Name and Save], specify the location into which the file is saved, and then click [Save].

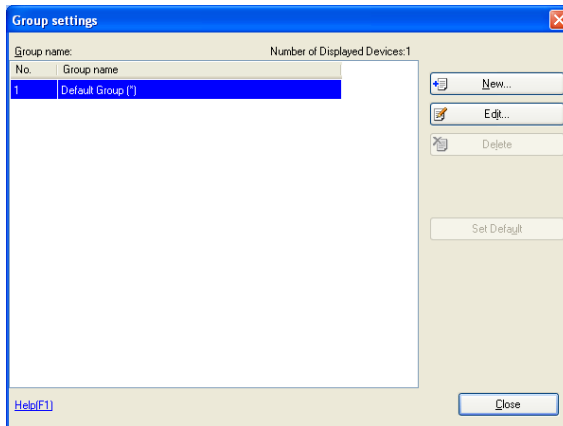
The function access restriction file is saved.

## 5.4 Group Settings

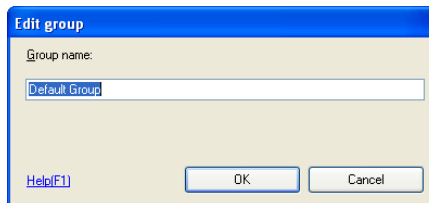
Register groups to be managed in Device Set-Up. If groups are configured and many devices are being managed, sorting the device list makes arranging items easier. Additionally, up to a maximum of 100 groups can be set.

### Create a New Group

- 1 Start the Device Set-Up to display main window.
  - For details of the method for displaying the main window, refer to page 3-1.
- 2 Select [Device] - [Edit registered group] from the [Tool] menu.
- 3 Click [New].



- 4 Set the Group name, and click [OK].

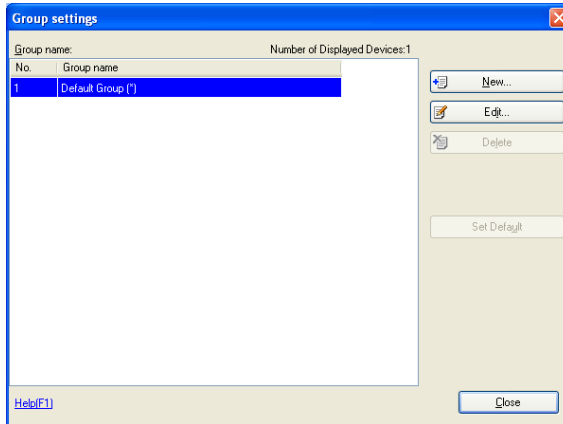


A group is created.

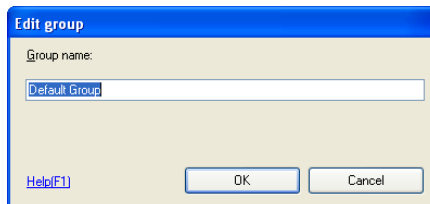
- 5 Click [Close].

## Edit a Group

- 1 Start the Device Set-Up to display main window.
  - For details of the method for displaying the main window, refer to page 3-1.
- 2 Select [Device] - [Edit registered group] from the [Tool] menu.
- 3 Select a group to edit from the list and click [Edit].



- 4 Change the Group name, and click [OK].

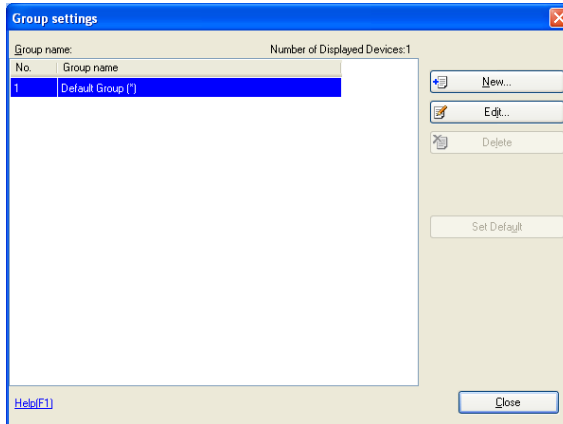


A group is edited.

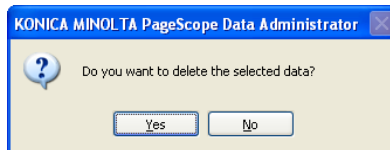
- 5 Click [Close].

## Delete a Group

- 1 Start the Device Set-Up to display main window.
  - For details of the method for displaying the main window, refer to page 3-1.
- 2 Select [Device] - [Edit registered group] from the [Tool] menu.
- 3 Select a group to delete from the list and click [Delete].



- 4 When the confirmation message is displayed, click [Yes].



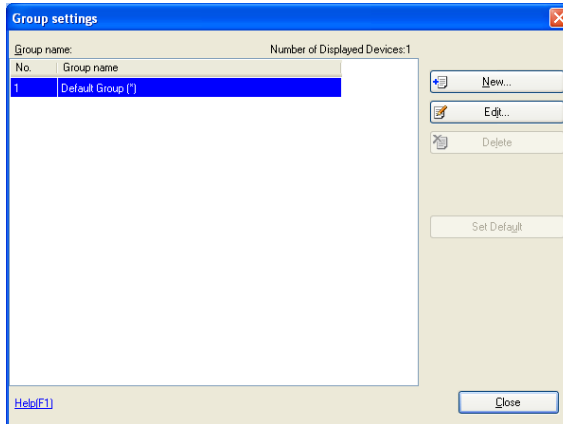
The group is deleted.

- 5 Click [Close].



## Set the Default Group

- 1 Start the Device Set-Up to display main window.
  - For details of the method for displaying the main window, refer to page 3-1.
- 2 Select [Device] - [Edit registered group] from the [Tool] menu.
- 3 Select a group to make default from the list, and click [Set Default].



- The default group is indicated with a “\*.”

- 4 Click [Close].



### Detail

*The default group is indicated with a “\*.”*

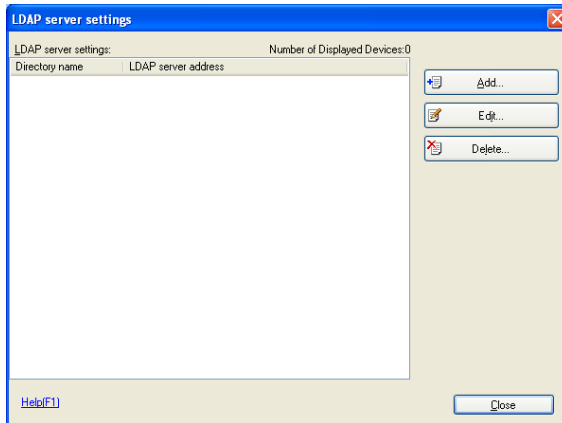
*The default group is the initial group displayed when registering a device.*

## 5.5 LDAP Server Access Settings

Register the LDAP server that reads the information to register on a device.

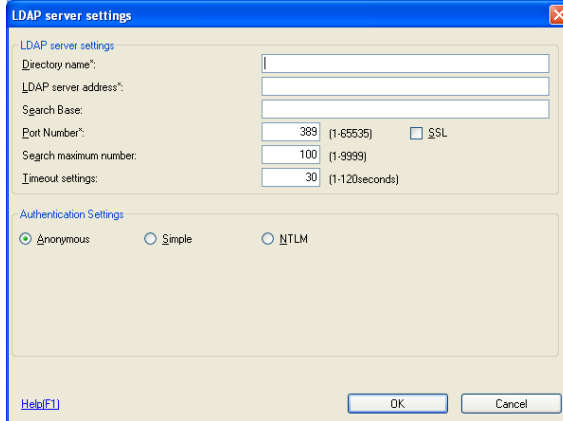
### Add LDAP Server Access Settings

- 1 Start the Device Set-Up to display main window.
  - For details of the method for displaying the main window, refer to page 3-1.
- 2 Select [LDAP server settings] from the [Tool] menu.
- 3 Click [Add].



- 4 Set LDAP server access settings, and click [OK].

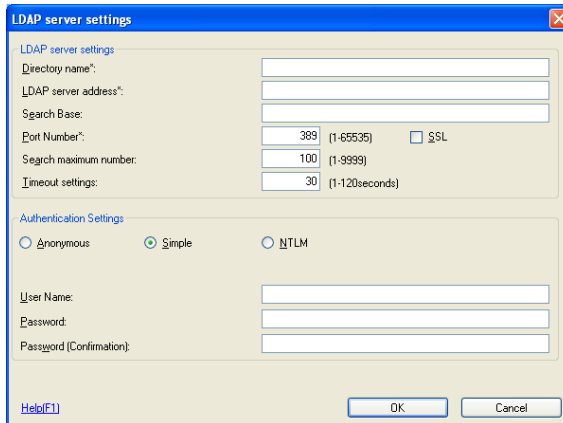
- When Anonymous is selected



The dialog box titled "LDAP server settings" contains the following fields and options:

- LDAP server settings section:
  - Directory name\*: [text box]
  - LDAP server address\*: [text box]
  - Search Base: [text box]
  - Port Number\*: [389] (1-65535)  SSL
  - Search maximum number: [100] (1-9999)
  - Timeout settings: [30] (1-120seconds)
- Authentication Settings section:
  - Anonymous
  - Simple
  - NTLM
- Buttons: Help[F1], OK, Cancel

- When Simple is selected



The dialog box titled "LDAP server settings" contains the following fields and options:

- LDAP server settings section:
  - Directory name\*: [text box]
  - LDAP server address\*: [text box]
  - Search Base: [text box]
  - Port Number\*: [389] (1-65535)  SSL
  - Search maximum number: [100] (1-9999)
  - Timeout settings: [30] (1-120seconds)
- Authentication Settings section:
  - Anonymous
  - Simple
  - NTLM
- User Name: [text box]
- Password: [text box]
- Password (Confirmation): [text box]
- Buttons: Help[F1], OK, Cancel

- When NTLM is selected

- Directory name: Input a name for the current details.
- LDAP server address: Input the IP address or DNS name of the directory server. If using SSL, input the DNS name.
- Search Base: Input the search base. (Up to 512 characters) (E.g.) ou=sales division, dc=ABCDEFGF, dc=com Consult with the LDAP administrator about search bases to input.
- Port Number: Specify the port number to be used when accessing LDAP servers.
- SSL: Select when using SSL for LDAP communications. It is recommended that you use SSL for secure transmission. Not using SSL means that LDAP data will be transmitted over the network in unsafe ASCII format.
- Search maximum number: Specify the maximum number of items to show when searching.
- Timeout settings: Specify the transmission timeout for the LDAP server. (1-120 sec)
- Authentication Settings (Anonymous, Simple, NTLM): Select the bind type for the LDAP server. Select NTLM when connecting to an Active Directory.
- Domain name: Input the domain name. Input Domain Name when connecting to an Active Directory.
- User Name: This field can be entered when authentication is not set to Anonymous.
- Password: This field can be entered when authentication is not set to Anonymous.
- Password (Confirmation): Re-input password for confirmation.

- 5 Click [OK].  
The LDAP server access settings are added.

### **Edit LDAP Server Access Settings**

- 1 Start the Device Set-Up to display main window.
  - For details of the method for displaying the main window, refer to page 3-1.
- 2 Select [LDAP server settings] from the [Tool] menu.
- 3 Select access settings to edit from the list, and click [Edit].
- 4 Edit LDAP Server Access Settings, and click [OK].  
The LDAP server access settings are edited.



#### **Detail**

*Refer to p. 5-22 for more information about LDAP server setting.*

### **Delete LDAP Server Access Settings**

- 1 Start the Device Set-Up to display main window.
  - For details of the method for displaying the main window, refer to page 3-1.
- 2 Select [LDAP server settings] from the [Tool] menu.
- 3 Select access settings to delete from the list, and click [Delete].
- 4 When the confirmation message is displayed, click [Yes].  
The LDAP server access settings are deleted.

## 5.6 Display Option Settings

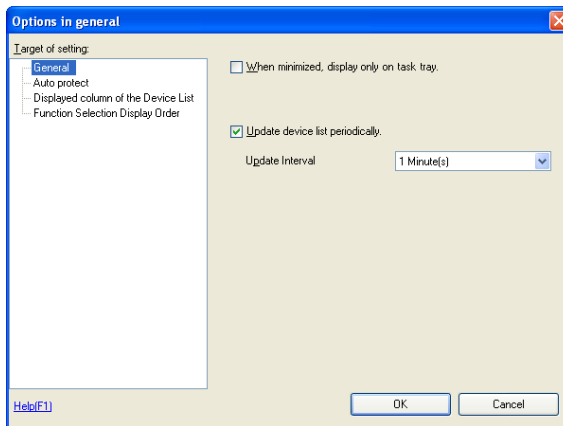
Set items to display in lists such as registered device lists, etc.

### Set Display Options

- 1 Start the Device Set-Up to display main window.
  - For details of the method for displaying the main window, refer to page 3-1.
- 2 Select [Option] - [General] from the [Tool] menu.

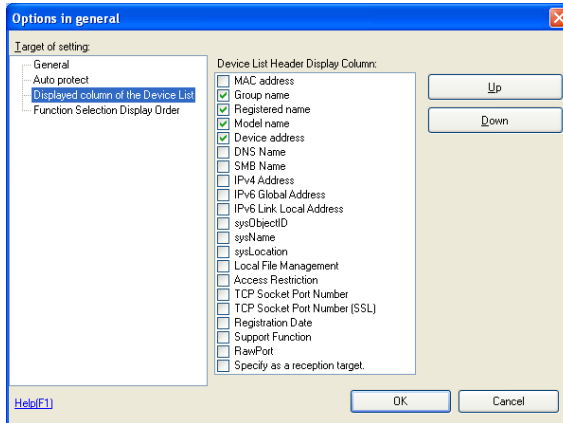
Options in general window appears.

  - When selecting [General] in the Target of setting area with [When minimized, display only on task tray] checked, the display is made only on the task tray while in the minimized display.
  - To update the Device list periodically, check [Update device list periodically.], and then specify [Update Interval].

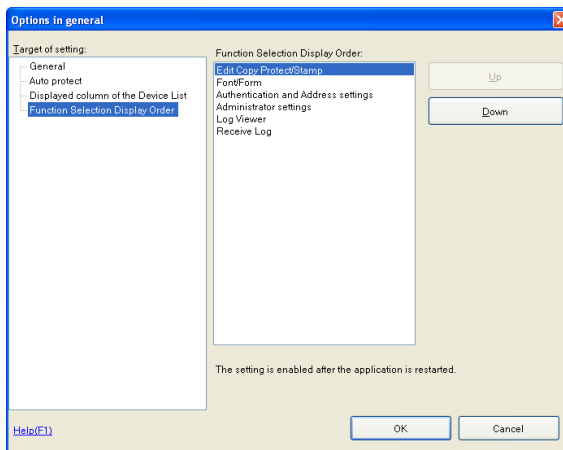


- Refer to p. 3-1 for more information about Auto protect.

- Selecting [Display column of the Device List] in the Target of setting area allows you to select an item to be displayed in the main window.



- Device List Header Display Column:  
Check an item you want to display.
- Up: Move the selected items up.
- Down: Move the selected items down.
- Selecting [Function Selection Display Order] in the Target of setting area allows you to select an item to be displayed in the Function Selection area of the main window.



- Up: Move the selected items up.
- Down: Move the selected items down.

### 3 Set display options, and click [OK].

**Detail**

*The settings of the Function Selection Display Order are made valid only after restart.*



## 5.7 Displaying the Help

From the help menu, it is possible to display the online help of the Device Set-up and the individual plug-ins.

### Displaying the Help

- 1 Start the Device Set-Up to display main window.
  - For details of the method for displaying the main window, refer to page 3-1.
- 2 Select [Help] - [Device Set-Up Help] from the [Help] menu.

It is also possible to display the help information of the individual plug-ins that have been installed.

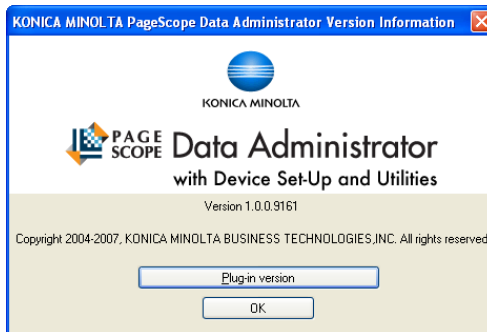
- Device Set-Up Help
- Copy Protection Utility Help
- Font Management Utility Help
- HDD Backup Utility Help
- Log Management Utility Help
- PageScope Data Administrator Help

## 5.8 Displaying the version information

The version information for the Device Set-Up can be displayed.

### Procedure

- 1 Start the Device Set-Up to display main window.
  - For details of the method for displaying the main window, refer to page 3-1.
- 2 Select [Help] - [Version information] from the [Help] menu.
- 3 Confirm the version.



### Detail

*When checking the version of the individual plug-ins that have been installed, click [Plug-in version].*



**KONICA MINOLTA**

<http://konicaminolta.com>