



KONICA MINOLTA

Setup Utility for RightFax

User's Guide



Contents

About this productiv
Trademarks and registered trademarksiv

1 Foreword

1.1 System requirements 1-1
1.2 Main features 1-2
 Using the RightFax server settings (application) 1-2
 Importing the job history from the RightFax server 1-2
 Importing the address book from the RightFax server 1-2
 Automatically searching for multifunctional peripherals 1-3
1.3 General operation 1-4
 General operation 1-4

2 Installing the Setup Utility for RightFax

2.1 Installing 2-1
 Installation procedure 2-1
2.2 Uninstalling 2-1

3 Writing an application to a multifunctional peripheral

 To write an application to a multifunctional peripheral 3-1

4 Using an application

4.1 Reading an application 4-2
 To read an application from a file 4-2
 To connect to a multifunctional peripheral and read
 the application 4-4
4.2 Description of the Application Registration window 4-7
4.3 Device Information page 4-9
 Displaying the Device Information page 4-9
 Description of the Device Information page 4-9
4.4 Application Information page 4-10
 Displaying the Application Information page 4-10
 Description of the Application Information page 4-10
4.5 Server Setting page 4-11



	Displaying the Server Setting page	4-11
	Description of the Server Setting page	4-11
4.6	Extension Setting page	4-13
	Displaying the Extension Setting page	4-13
	Description of the Extension Setting page	4-13
	Items that can be specified in the Extension Setting page	4-14
	Type Information (text input)	4-16
	Type Information (choice selection)	4-17
	Type Information (time input)	4-18
	Type Information (Cover Sheet)	4-19
4.7	Scan Setting page	4-20
	Displaying the Scan Setting page	4-20
	Description of the Scan Setting page	4-20
	Items that can be specified in the Scan Setting page	4-21
4.8	Notification Setting page	4-22
	Displaying the Notification Setting page	4-22
	Description of the Notification Setting page (Print Notification)	4-22
	Description of the Notification Setting page (E-mail Notification)	4-23
	Description of the Notification Setting page (File Notification)	4-24
4.9	Registering new applications	4-25
	To register a new application	4-25
4.10	Saving an application as a file	4-30
	To save an application as a file	4-30
5	Managing RightFax server information	
	Displaying the list of RightFax servers	5-1
5.1	Description of the Server List dialog box	5-1
	Description of the Server Setting dialog box	5-2
6	Managing the information for multifunctional peripherals	
6.1	Registering a multifunctional peripheral	6-1
	To register a multifunctional peripheral	6-1
	Description of the Add Device dialog box	6-3
6.2	Editing multifunctional peripheral information	6-4
	Displaying the Device Information dialog box	6-4
	Description of the Device Information dialog box	6-4
	Description of the DeviceInformation - Option dialog box	6-6



7 Retrieving the job history

To retrieve the job history 7-2

8 Writing an address book to a multifunctional peripheral

To write an address book to a multifunctional peripheral 8-1



About this product

The Setup Utility for RightFax is software for specifying RightFax settings for a multifunctional peripheral (MFP) linked to the RightFax Server.

Trademarks and registered trademarks

Trademark acknowledgements

KONICA MINOLTA and the KONICA MINOLTA Logo are registered trademarks or trademarks of KONICA MINOLTA HOLDINGS, INC.

bizhub is registered trademark or trademark of KONICA MINOLTA BUSINESS TECHNOLOGIES, INC.

Microsoft® and Windows® are either registered trademarks or trademarks of Microsoft Corporation in the United States and/or other countries.

All other company and product names are either trademarks or registered trademarks of their respective companies.

Dialog boxes

The dialog boxes shown in this manual are those that appear in Windows XP.



Reminder

The dialog boxes that appear in this document may differ from those that appear on your computer, depending on the installed devices and specified settings.



Note

Unauthorized reproduction, translation or duplication of this document, whether in its entirety or in part, is strictly prohibited.

The content of this document is subject to change without notice.

*Copyright © 2006 KONICA MINOLTA BUSINESS TECHNOLOGIES, INC.
All rights reserved.*

1 Foreword

1.1 System requirements

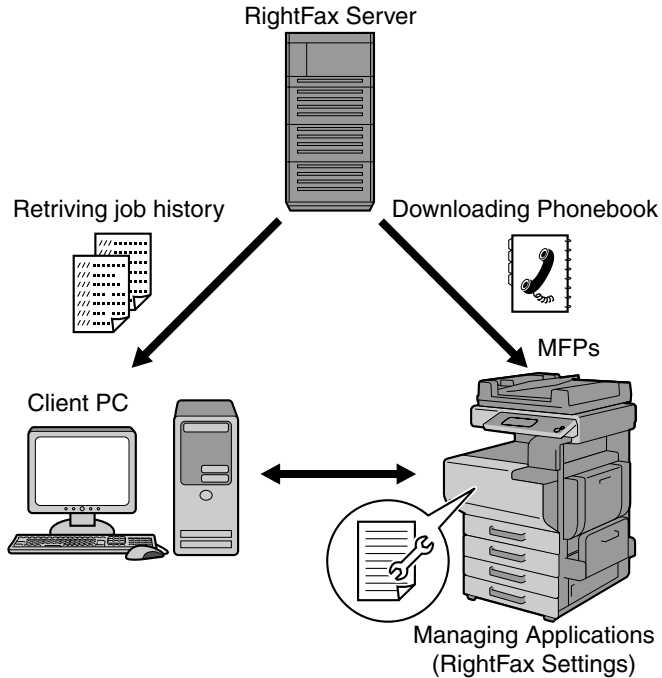
The system requirements for the Setup Utility for RightFax are described below.

Compatible operating systems	Windows XP Professional (SP3 or later) Windows XP Professional x64 Edition (SP2 or later) Windows Vista Enterprise (SP2 or later) * Windows Vista Business (SP2 or later) * Windows Vista Ultimate (SP2 or later) * Windows 7 Enterprise (SP1 or later) * Windows 7 Professional (SP1 or later) * Windows 7 Ultimate (SP1 or later) *
Computer	Same as specified for your operating system.
Memory	Same as specified for your operating system.
Processor	Same as specified for your operating system.
Network	Computer with TCP/IP protocol settings correctly specified
Hard disk	100 MB or more of available space
Monitor	Resolution: SVGA (800 × 600) or more
Software	RightFax server version 9.0 or later

* 32-bit (x86) and 64-bit (x64) editions are supported.

Refer to the Readme file for the latest information about service packs and so on.

1.2 Main features



Using the RightFax server settings (application)

The RightFax server settings (application) saved on a multifunctional peripheral can be read and edited.

Importing the job history from the RightFax server

The job history for a multifunctional peripheral can be imported from the RightFax server.

Importing the address book from the RightFax server

The address book can be imported from the RightFax server. In addition, the imported address book can be written to a multifunctional peripheral.

Automatically searching for multifunctional peripherals

Multifunctional peripherals within the same IP segment of the local area network (LAN) can automatically be searched for.



Note

Multifunctional peripherals cannot be detected through a router.

1.3 General operation

Follow the procedure described below to specify the settings for the RightFax server.



Reminder

For details on the setup and operating procedures for the RightFax server, refer to the manual for the RightFax server. For details on the setup procedure so that the multifunctional peripheral can link with the RightFax server, refer to the manual for the multifunctional peripheral.

General operation

The Setup Utility for RightFax is software used to manage multifunctional peripherals. The Setup Utility for RightFax should be used by the administrator of a multifunctional peripheral to specify settings for the RightFax server.

Before performing the operation, check for the following.

- ✓ The RightFax server is running.
 - ✓ A MFP module is installed on the RightFax server.
- 1 Install the Setup Utility for RightFax onto your computer.
 - “Installing the Setup Utility for RightFax” on page 2-1
 - 2 Start up the Setup Utility for RightFax, edit the RightFax server settings, and then write the edited settings to a multifunctional peripheral.
 - “Writing an application to a multifunctional peripheral” on page 3-1
 - 3 Obtain information from the RightFax server, if necessary.
 - “Retrieving the job history” on page 7-1 and “Writing an address book to a multifunctional peripheral” on page 8-1

2 Installing the Setup Utility for RightFax

2.1 Installing

Install the Setup Utility for RightFax onto your computer.



Reminder

Before installing the utility, be sure to log on with Administrator privileges.

Quit all applications (including virus detection programs) that are running.

Installation procedure

- 1 Start up the installer (setup.exe).
- 2 Follow the instructions that appear in order to complete the installation.

2.2 Uninstalling

The Setup Utility for RightFax can be uninstalled using either of the following two methods.

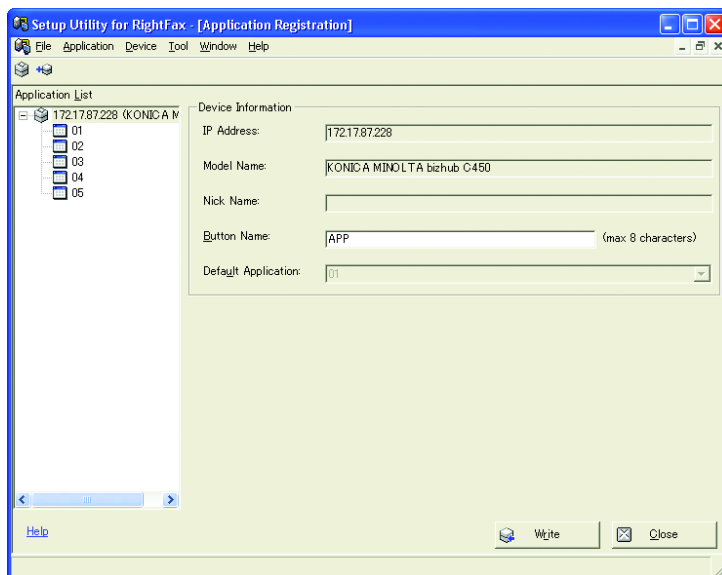
- Using “Add or Remove Programs”
- Using setup.exe again



Reminder

Before uninstalling, exit the Setup Utility for RightFax.

The Application Registration window appears.



- 8 Edit the application.
 - For details on editing an application, refer to “Description of the Application Registration window” on page 4-7.
- 9 On the “File” menu, click “Write”.
 - If a password has been set on the multifunctional peripheral, enter the password in the Password dialog box.The confirmation message appears.
- 10 Click the [OK] button.

The application settings are written to the multifunctional peripheral.
The application is now written to the multifunctional peripheral.

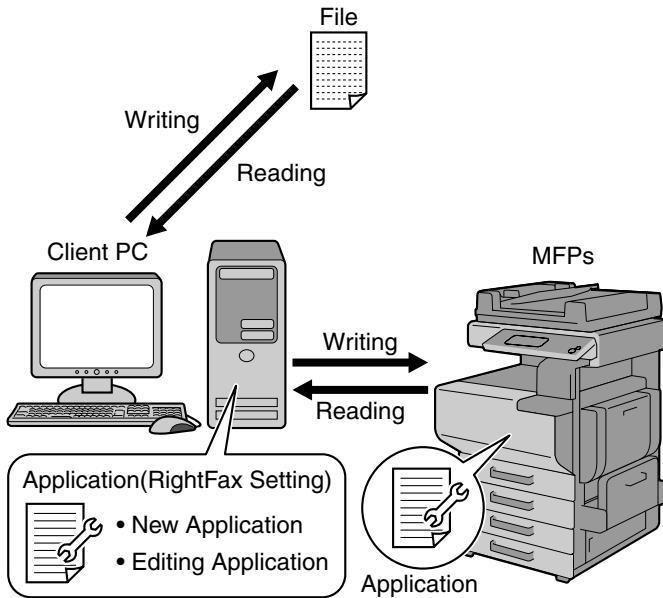
4 Using an application

Various operations can be performed with an application (RightFax settings saved on a multifunctional peripheral).

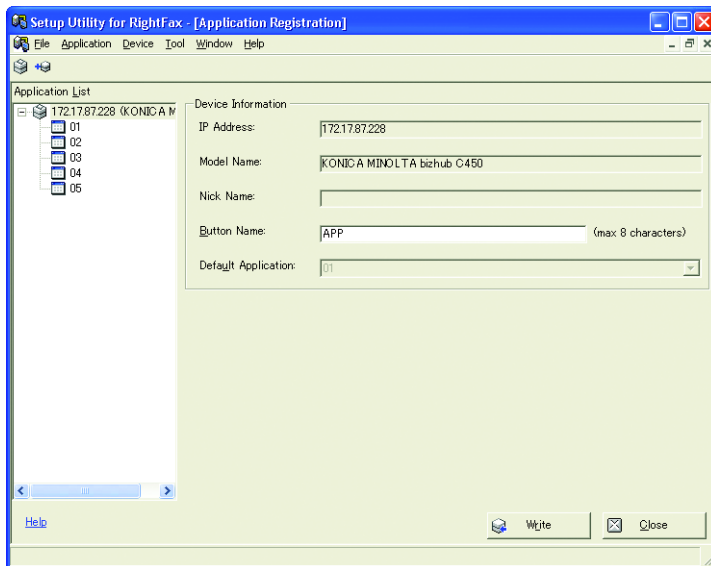
In order to edit an application, it must be read into the Setup Utility for RightFax.

This section describes the procedures for the following operations.

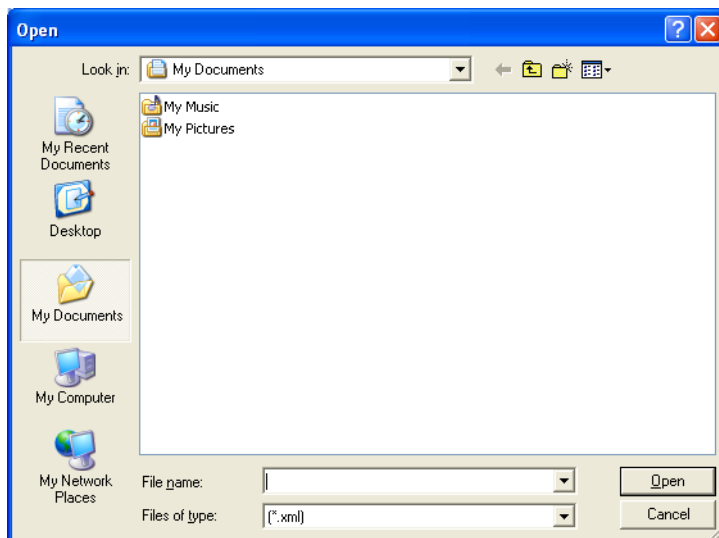
- Reading an application
- Editing application settings
- Programming new applications into the multifunctional peripheral
- Writing an application to multiple multifunctional peripherals
- Saving an application as a file



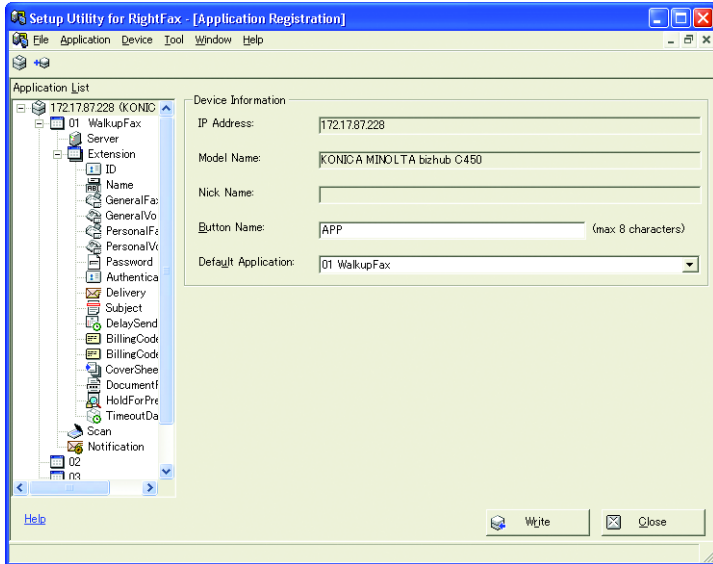
- 3 On the “Device” menu, click “Open Device”.
The Application Registration window appears.



- 4 On the “File” menu, click “Import from File”.
The following dialog box appears.



- 5 Select from the computer the application file (*.xml) to be read, and then click the [Open] button.
 - For details on the Application Registration window, refer to “Description of the Application Registration window” on page 4-7. The application is read.



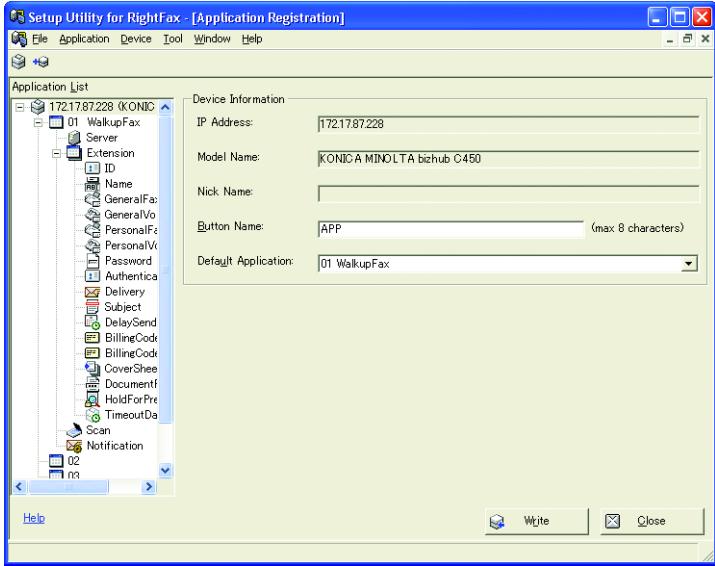
To connect to a multifunctional peripheral and read the application

This procedure describes how to connect to the multifunctional peripheral and read the application information.

Before performing the operation, check for the following.

- ✓ The multifunctional peripheral to be connected to is registered with the Setup Utility for RightFax.
- 1 From the Windows Start menu, start the Setup Utility for RightFax.
 - Click the Windows Start button, point to “All Programs”, then “KONICA MINOLTA”, “Setup Utility for RightFax 1.0”, and then click “Setup Utility for RightFax”.

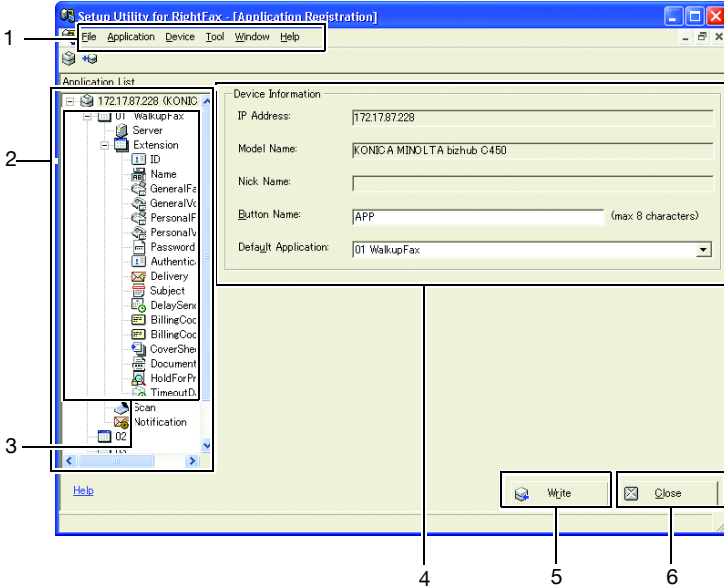
The multifunctional peripheral is connected to, and the Application Registration window appears.









4.2 Description of the Application Registration window

From the Application Registration window, various settings can be specified for the application read into the Setup Utility for RightFax.

A description of the Application Registration window is provided below.



No.	Item	Description
1	Menu bar	The following menus are available.
	“File” menu	This menu provides commands for reading and saving application file, writing applications to multifunctional peripherals, and exiting the Setup Utility for RightFax.
	“Application” menu	This menu provides commands for using applications.
	“Tool” menu	This menu provides commands for registering servers, importing the job history and retrieving an address book.
	“Window” menu	This menu provides commands for selecting different software windows.
2	“Help” menu	This command displays the Help for the Setup Utility for RightFax.
	Tree pane (Application List)	The connected multifunctional peripherals and all applications saved in the multifunctional peripherals appear in a hierarchical structure. Click the multifunctional peripheral icon () at the top to display the Device Information page. <ul style="list-style-type: none"> • “Device Information page” on page 4-9

No.	Item	Description
3	Applications	<p>The settings that can be specified for an application are displayed.</p> <p>Click an icon to display the available settings in the settings pane on the right side of the window.</p>
	Application icon ()	<p>Click this icon to display the Application Information page.</p> <ul style="list-style-type: none"> • “Application Information page” on page 4-10
	Server icon ()	<p>Click this icon to display the Server Setting page. The information for the linked RightFax server can be specified.</p> <ul style="list-style-type: none"> • “Server Setting page” on page 4-11
	Extension icon ()	<p>Click this icon to display the Extension Setting page. Extension settings can be specified.</p> <ul style="list-style-type: none"> • “Extension Setting page” on page 4-13
	Scan icon ()	<p>Click this icon to display the Scan Setting page. Scanning settings can be specified.</p> <ul style="list-style-type: none"> • “Scan Setting page” on page 4-20
	Notification icon ()	<p>Click this icon to display the Notification Setting page. The method of receiving notifications from the RightFax server can be specified.</p> <ul style="list-style-type: none"> • “Notification Setting page” on page 4-22
4	Settings pane	<p>The settings page for the item selected in the tree pane is displayed.</p>
5	[Write] button	<p>Click this button to write the new settings to the multifunctional peripheral.</p>
6	[Close] button	<p>Click this button to close the Application Registration window.</p>

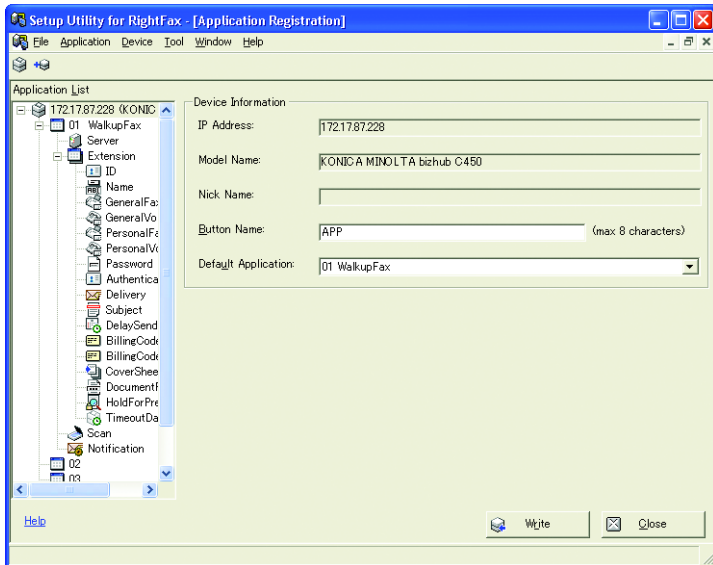
4.3 Device Information page

The information for the multifunctional peripheral is displayed in the Device Information page.

Displaying the Device Information page

- ➔ Click the multifunctional peripheral icon at the top of the tree pane of the Application Registration window.
The Device Information page appears.

Description of the Device Information page



The following information is displayed in the Device Information page.

Item Name	Description
IP Address	The IP address of the multifunctional peripheral is displayed.
Model Name	The name of the model for the multifunctional peripheral is displayed.
Nick Name	The nickname (name that is easy to remember) for the multifunctional peripheral is displayed.
Button Name	Specify the name of the button for selecting the extended application.
Default Application	Select the default application.

4.4 Application Information page

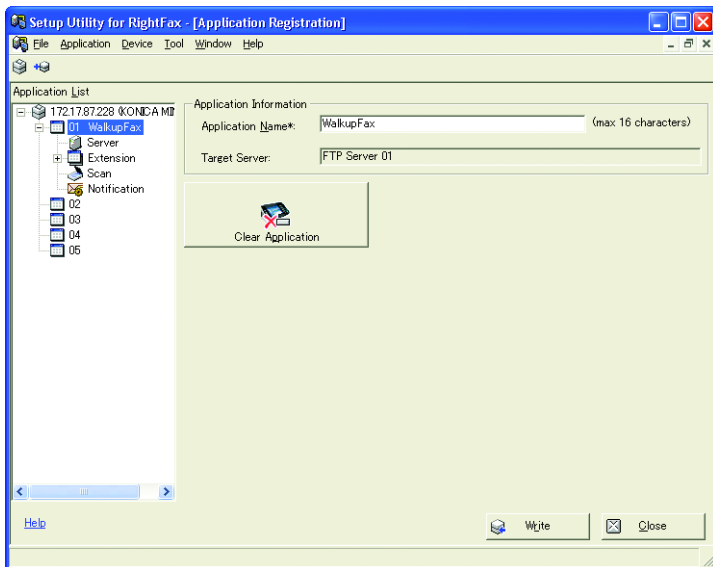
The application information can be specified from the Application Information page.

Displaying the Application Information page

- Click an application icon in the tree pane of the Application Registration window.

The Application Information page appears.

Description of the Application Information page



Settings for the following parameters can be specified from the Application Information page.

Item Name	Description
Application Name	Specify the name of the application.
Target Server	The name or IP address of the selected RightFax server is displayed.
[Clear Application] button	Click this button to erase the selected application.

4.5 Server Setting page

Information for the FTP connection between the multifunctional peripheral and the RightFax server can be specified in the Server Setting page.

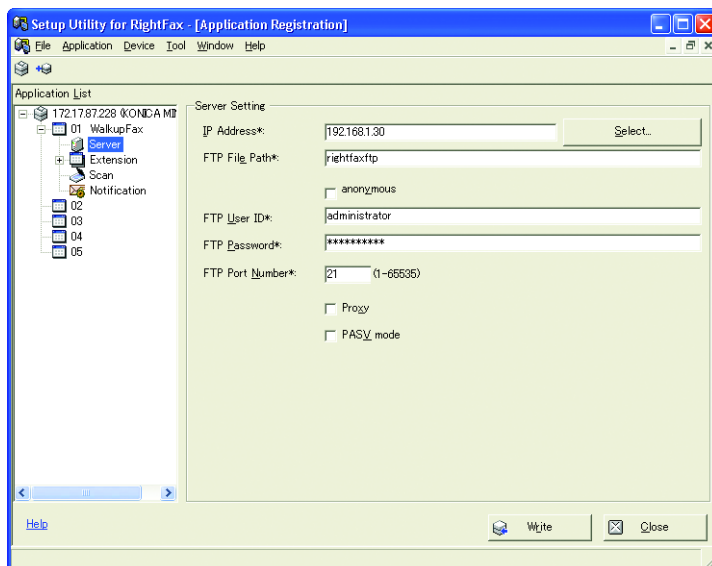
On this page, the shared folder, which is called “Shared Directory” and is necessary for exchanging files between the multifunctional peripheral and the RightFax server, is specified.

Displaying the Server Setting page

- Click a Server icon in the tree pane of the Application Registration window.

The Server Setting page appears.

Description of the Server Setting page



Settings for the following parameters can be specified in the Server Setting page.

Item Name	Description
IP Address	Specify the IP address of the server.
[Select] button	Click this button to select another registered server.
FTP File Path	Specify the path to the FTP site.
“anonymous” check box	Select this check box to connect with the FTP site while logging on as an anonymous user.
FTP User ID	Specify the user ID used with the FTP connection.
FTP Password	Specify the password used with the FTP connection.
FTP Port Number	Specify the port number used with the FTP connection.
“Proxy” check box	Select this check box to communicate with the FTP site using the proxy specified from the multifunctional peripheral.
“PASV Mode” check box	Select this check box to communicate with the FTP site using passive mode.

4.6 Extension Setting page

Extension items for the RightFax server can be specified from the Extension Setting page.

The extension items registered with the application can be selected. In addition, the buttons that appear in the control panel of the multifunctional peripheral can be specified, and the parameters for each extension item can be set.



Note

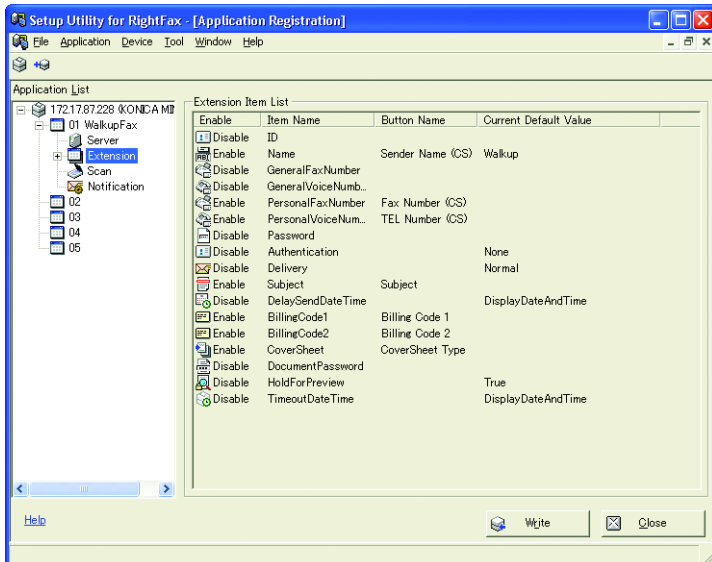
There is a limit on the number of extension items that can be specified. If the maximum number of extension items is exceeded, the message "Limit Over" may appear. If this message appears, clear the "Extension Button Enable" check box for some of the extension items, and then specify the settings.

Displaying the Extension Setting page

- ➔ Click an Extension icon in the tree pane of the Application Registration window.

The Extension Setting page appears.

Description of the Extension Setting page



Settings for the following parameters can be specified in the Extension Setting page.

Item Name	Description
Extension Item List	The extension items are listed. For details on the extension items, refer to “Items that can be specified in the Extension Setting page” on page 4-14.
“Enable”	If “Enable” appears, the item is registered as an extension.
Item Name	The name of the selected item is displayed.
Button Name	Specify the name of the button that appears in the control panel of the multifunctional peripheral.
Current Default Value	The default setting currently specified for the selected item is displayed.

Items that can be specified in the Extension Setting page

The following items are available in the **Extension Item List** of the Extension Setting page.

Item Name	Description	Input Method
ID	Input range: Up to 21 characters No spaces	Text input <ul style="list-style-type: none"> “Type Information (text input)” on page 4-16
Name	No spaces	Text input <ul style="list-style-type: none"> “Type Information (text input)” on page 4-16
GeneralFaxNumber	Input range: Up to 31 characters No spaces	Text input <ul style="list-style-type: none"> “Type Information (text input)” on page 4-16
GeneralVoiceNumber	Input range: Up to 31 characters No spaces	Text input <ul style="list-style-type: none"> “Type Information (text input)” on page 4-16
PersonalFaxNumber	Input range: Up to 31 characters No spaces	Text input <ul style="list-style-type: none"> “Type Information (text input)” on page 4-16
PersonalVoiceNumber	Input range: Up to 31 characters No spaces	Text input <ul style="list-style-type: none"> “Type Information (text input)” on page 4-16
Password	Input range: Up to 11 characters	Text input <ul style="list-style-type: none"> “Type Information (text input)” on page 4-16
Authentication	Choices: None, Password	Choice selection <ul style="list-style-type: none"> “Type Information (choice selection)” on page 4-17
Delivery	Choices: Normal, Secure, Certified, SecureCertified	Choice selection <ul style="list-style-type: none"> “Type Information (choice selection)” on page 4-17

Item Name	Description	Input Method
Subject	No spaces	Text input <ul style="list-style-type: none"> • “Type Information (text input)” on page 4-16
DelaySendDate-Time		Text input <ul style="list-style-type: none"> • “Type Information (text input)” on page 4-16
BillingCode1	Input range: Up to 15 characters No spaces	Text input <ul style="list-style-type: none"> • “Type Information (text input)” on page 4-16
BillingCode2	Input range: Up to 15 characters No spaces	Text input <ul style="list-style-type: none"> • “Type Information (text input)” on page 4-16
CoverSheet	Input range: Up to 13 characters No spaces	Cover Sheet input <ul style="list-style-type: none"> • “Type Information (Cover Sheet)” on page 4-19
DocumentPass-word	Input range: Up to 31 characters No spaces	Text input <ul style="list-style-type: none"> • “Type Information (text input)” on page 4-16
HoldForPreview	Choices: No, Yes	Choice selection <ul style="list-style-type: none"> • “Type Information (choice selection)” on page 4-17

Type Information (text input)

If an extension item with text input was selected, the following parameters can be set.

Item Name	Description
“Extension Button Enable” check box	Select this check box to display the buttons for the extension items in the control panel of the multifunctional peripheral.
Item Name	The function name of the selected item is displayed.
Button Name	Specify the name of the button that appears in the control panel of the multifunctional peripheral.
Panel Message	Specify a description for the button that appears in the control panel of the multifunctional peripheral.
Button Type	Select one of the following functions for the button that appears in the control panel of the multifunctional peripheral. <ul style="list-style-type: none"> • Optional Item • Required Item • Show Only Item • Hide Item
Default Value	Specify the default setting for the selected extension item.
“Input string shown as ****” check box	Select this check box to display the text entered in the “Default Value” box as “****”.
Keyboard Type	Select one of the following types for the keyboard that appears in the control panel of the multifunctional peripheral. <ul style="list-style-type: none"> • ASCII • Device Dependant

Type Information (choice selection)

If an extension item with choice selection was selected, the following choice settings can be specified.



Note

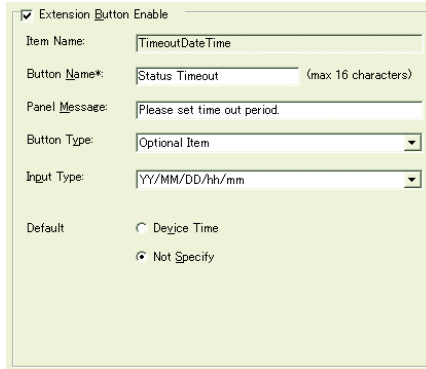
The choices are set first for each extension item.

Available	Options	Default	Default
<input checked="" type="checkbox"/>	None	(Default)	
<input checked="" type="checkbox"/>	Password		
<input type="checkbox"/>			
<input type="checkbox"/>			
<input type="checkbox"/>			
<input type="checkbox"/>			
<input type="checkbox"/>			
<input type="checkbox"/>			

Item Name	Description
"Extension Button Enable" check box	Select this check box to display the buttons for the extension items in the control panel of the multifunctional peripheral.
Item Name	The function name of the selected item is displayed.
Button Name	Specify the name of the button that appears in the control panel of the multifunctional peripheral.
Panel Message	Specify a description for the button that appears in the control panel of the multifunctional peripheral.
Button Type	Select one of the following functions for the button that appears in the control panel of the multifunctional peripheral. <ul style="list-style-type: none"> • Optional Item • Required Item • Show Only Item • Hide Item
"Available" check box	Select this check box to display the choice in the control panel of the multifunctional peripheral.
Options	The name of the choice is displayed.
Default	If "(Default)" appears, the choice is set as the default.
[Default] button	Click this button to set the selected choice as the default setting.

Type Information (time input)

If an extension item with time input was selected, the following parameters can be set.



Item Name	Description
"Extension Button Enable" check box	Select this check box to display the buttons for the extension items in the control panel of the multifunctional peripheral.
Item Name	The function name of the selected item is displayed.
Button Name	Specify the name of the button that appears in the control panel of the multifunctional peripheral.
Panel Message	Specify a description for the button that appears in the control panel of the multifunctional peripheral.
Button Type	Select one of the following functions for the button that appears in the control panel of the multifunctional peripheral. <ul style="list-style-type: none"> • Optional Item • Required Item • Show Only Item • Hide Item
Input Type	Select the following formats for the time entered from the control panel of the multifunctional peripheral. <ul style="list-style-type: none"> • YY/MM/DD/hh/mm
Default	Select one of the following defaults for specifying the time from the control panel of the multifunctional peripheral. <ul style="list-style-type: none"> • Device Time • Not Specify

Type Information (Cover Sheet)

If an extension item with Cover Sheet input was selected, the following parameters can be set.

Item Name	Description
"Extension Button Enable" check box	Select this check box to display the buttons for the extension items in the control panel of the multifunctional peripheral.
Item Name	The function name of the selected item is displayed.
Button Name	Specify the name of the button that appears in the control panel of the multifunctional peripheral.
Panel Message	Specify a description for the button that appears in the control panel of the multifunctional peripheral.
Button Type	Select one of the following functions for the button that appears in the control panel of the multifunctional peripheral. <ul style="list-style-type: none"> • Optional Item • Required Item • Show Only Item • Hide Item
Default Value	Type in the number of the cover sheet to be used by default.
[Ref.] button	If this button is clicked, the CoverSheet List dialog box appears. Select the cover sheet to be used by default.

4.7 Scan Setting page

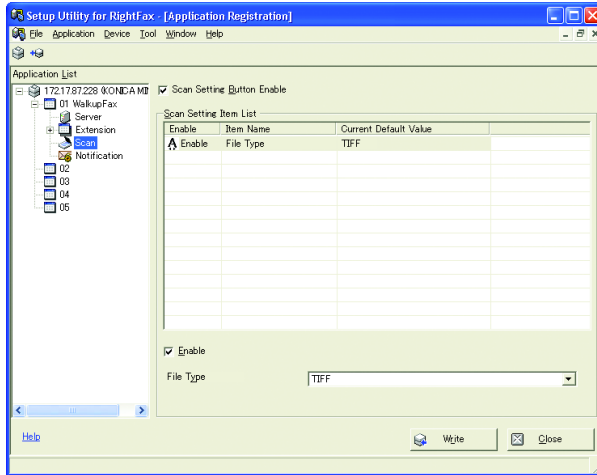
The scan settings can be specified from the Scan Setting page.

Displaying the Scan Setting page

- Click a Scan icon in the tree pane of the Application Registration window.

The Scan Setting page appears.

Description of the Scan Setting page



Item Name	Description
“Scan Setting Button Enable” check box	Select this check box to display the buttons for the scan settings in the control panel of the multifunctional peripheral.
Scan Setting Item List	The scan parameters are listed. For details on the extension items, refer to “Items that can be specified in the Extension Setting page” on page 4-14.
Enable	If “Enable” appears, the item is registered as a scan parameter.
Item Name	The name of the selected item is displayed.
Current Default Name	The default setting currently specified for the selected item is displayed.
“Enable” checkbox	Select the check box to register the selected item as a scan setting item.
Scan Setting Item	Specify the default setting for the scan setting selected in the Scan Setting Item List . The parameters that can be set differ depending on the scan setting item that was selected.

Items that can be specified in the Scan Setting page

The following items are available in the **Scan Setting Item List** of the Scan Setting page.

Item Name	Description
File Type	Select from the following. <ul style="list-style-type: none">• Tiff• PDF The default setting is "Tiff".

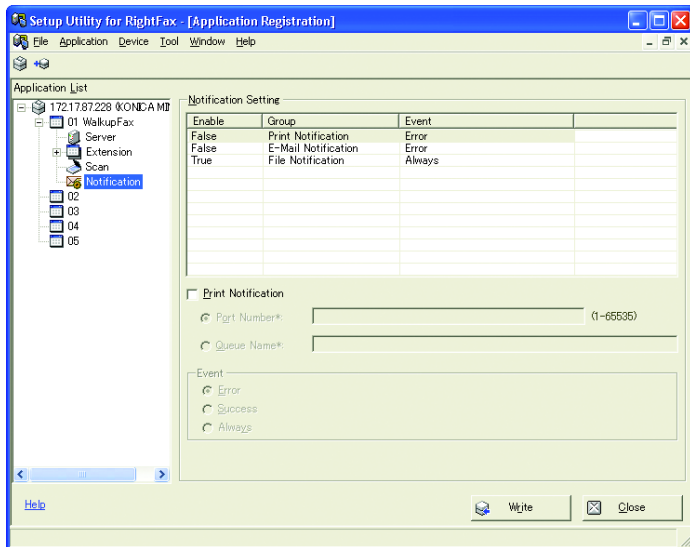
4.8 Notification Setting page

Settings for the method of receiving notifications from the RightFax server can be specified from the Notification Setting page.

Displaying the Notification Setting page

- 1 Click a Notification icon in the tree pane of the Application Registration window.
The Notification Setting page appears.
- 2 From the **Notification Setting** list, select the group of parameters that are to be set.

Description of the Notification Setting page (Print Notification)

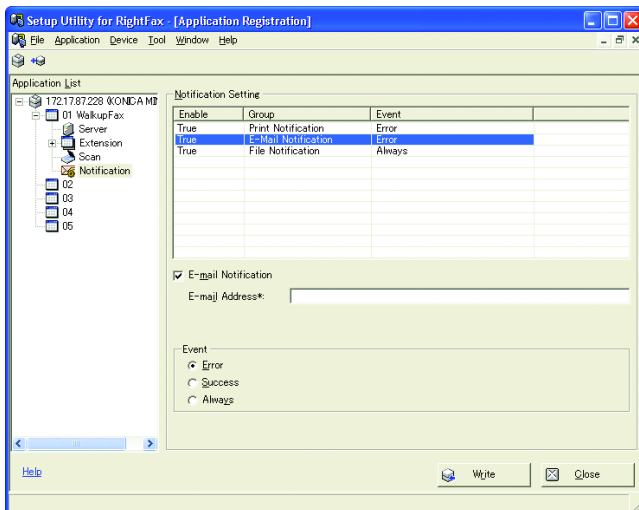


If “Print Notification” was selected in the **Notification Setting** list of the Notification Setting page, settings can be specified for the following.

Item Name	Description
“Print Notification” check box	Select this check box for the RightFax server to send notifications by print.

Item Name	Description
“Port Number” option	Select this option for RAW port printing to the port number specified for the multifunctional peripheral. In the text box, type the port number of the multifunctional peripheral to be used for printing. Range: 1 to 65535 Default: 9100
“Queue Name” option	Select this option to print to the queue specified for the RightFax server. In the text box, type the name of the RightFax queue to be used for printing. Range: Up to 32 characters
Event	Select which of the following events should occur in order for the RightFax server to send a print notification. <ul style="list-style-type: none"> • Error • Success • Always

Description of the Notification Setting page (E-mail Notification)

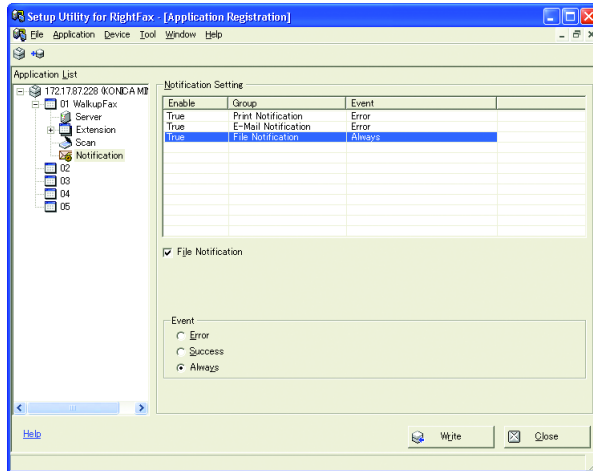


If “E-mail Notification” was selected in the **Notification Setting** list of the Notification Setting page, settings can be specified for the following.

Item Name	Description
“E-mail Notification” check box	Select this check box for the RightFax server to send notifications by e-mail.
E-mail Address	Specify the destination of the e-mail message. Range: Up to 32 characters

Item Name	Description
Event	Select which of the following events should occur in order for the RightFax server to send an e-mail notification. <ul style="list-style-type: none"> • Error • Success • Always

Description of the Notification Setting page (File Notification)



If “File Notification” was selected in the **Notification Setting** list of the Notification Setting page, settings can be specified for the following.

Item Name	Description
“File Notification” check box	Select this check box for the RightFax server to send notifications as a file. Only jobs with this check box selected are included when the job history is retrieved. For details on retrieving the job history, refer to “Retrieving the job history” on page 7-1
Event	Select which of the following events should occur in order for the RightFax server to send a file notification. <ul style="list-style-type: none"> • Error • Success • Always

4.9 Registering new applications

The multifunctional peripheral may not be programmed with applications, for example, immediately after the multifunctional peripheral is registered with the Setup Utility for RightFax. Start the Application Wizard, and then program the multifunctional peripheral with new applications.

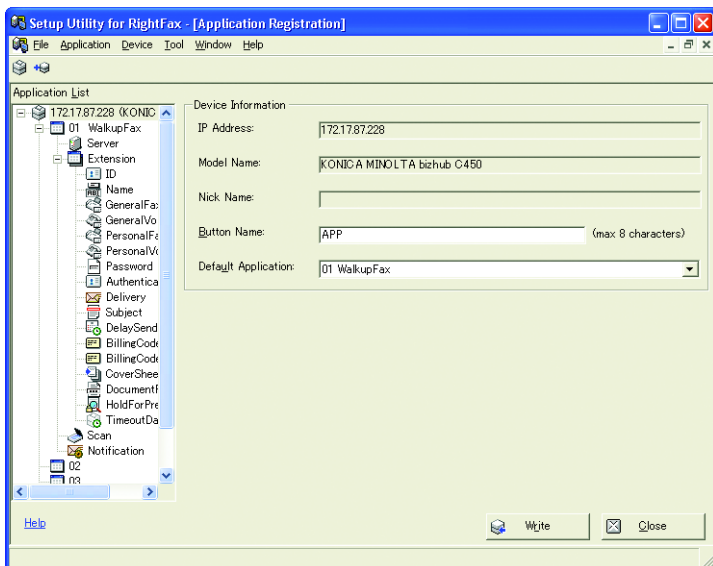
The Application Wizard can be started using either of the following methods.

- Click “Add” on the “Application” menu of the Application Registration window.
- Click the [Add Application] on the right side of the Application Information page.

To register a new application

The following procedure describes how to start the Application Wizard from the “Application” menu and register an application.

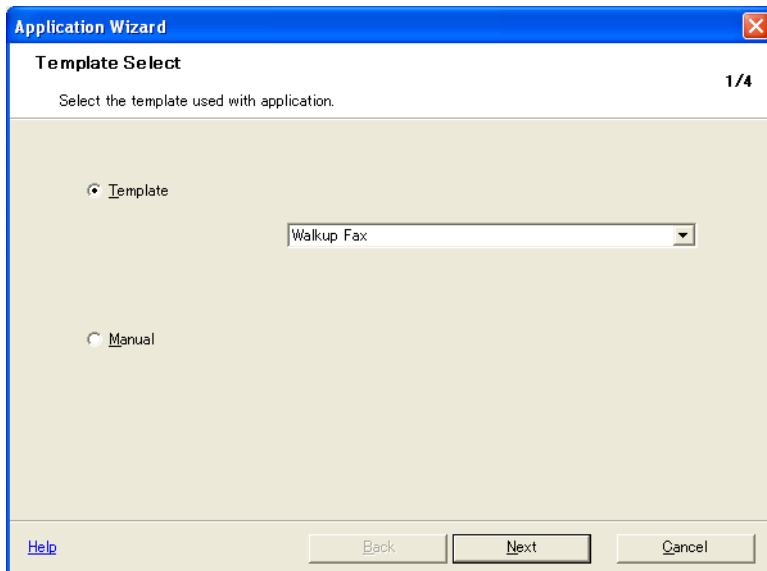
- 1 Display the Application Registration window.



- For details on displaying the Application Registration window, refer to “Reading an application” on page 4-2.

- 2 On the “Application” menu, click “Add”.

The Application Wizard starts up, and the Template Select page appears.



- 3 Select the template to be used for the application.
 - If “Template” is selected, a template that has already been registered can be selected. Since various settings have already been specified, less time will be needed to specify the settings.
 - If “Manual” is selected, specify all settings as desired.

4 Click the [Next] button.

The Application Information page appears.

The screenshot shows a dialog box titled "Application Wizard" with a blue header and a red close button. The main title is "Application Information" and the subtitle is "Set application basic information" with a progress indicator "2/4". The dialog contains three sections: "Application Information" with a text input field for "Application Name" containing "WalkupFax" (with a "(max 16 characters)" note) and a text input field for "Application Index" containing "1"; "Target Server" with a dropdown menu showing "RightFaxServer01"; and a footer with a "Help" link and "Back", "Next", and "Cancel" buttons.

5 Specify the application information.

- In the “Application Name” box, type in the name of the application. A maximum of 16 characters can be entered. In addition, this setting must be specified.
- From the “Target Server” list, select the RightFax server to be linked to the multifunctional peripheral.

6 Click the [Next] button.

The Extension Setting page appears.

Application Wizard 3/4

Extension Setting

Select extension items used with application

Enable	Item Name	Button Name	Current Default Value
<input type="checkbox"/>	ID	User ID	
<input checked="" type="checkbox"/>	Name	Sender Name (CS)	Walkup
<input checked="" type="checkbox"/>	GeneralFaxNumber	Fax Number (CS)	
<input checked="" type="checkbox"/>	GeneralVoiceNumber	TEL Number (CS)	
<input type="checkbox"/>	PersonalFaxNumber	Personal Fax No.	
<input type="checkbox"/>	PersonalVoiceNumber	Personal TEL No.	
<input type="checkbox"/>	Password	Password	
<input type="checkbox"/>	Authentication	Password Auth#	None
<input type="checkbox"/>	Delivery	Delivery Method	Normal
<input checked="" type="checkbox"/>	Subject	Subject	
<input type="checkbox"/>	DelaySendDateTime	DelaySend	DisplayDateAndTime
<input checked="" type="checkbox"/>	BillingCode1	Billing Code 1	
<input checked="" type="checkbox"/>	BillingCode2	Billing Code 2	
<input checked="" type="checkbox"/>	CoverSheet	CoverSheet	
<input type="checkbox"/>	DocumentPassword	Document PW	

Help Back **Next** Cancel

7 Select the check boxes of the items to be registered with the application.

- If “Manual” was selected in the Template Select page, the check boxes of all items are cleared.
- To change the settings, click the [Back] button to return to the previous page.

- Click the [Next] button.
The Finish page appears.



- Click the [Finish] button.
The application is registered, and the Application Registration window appears.

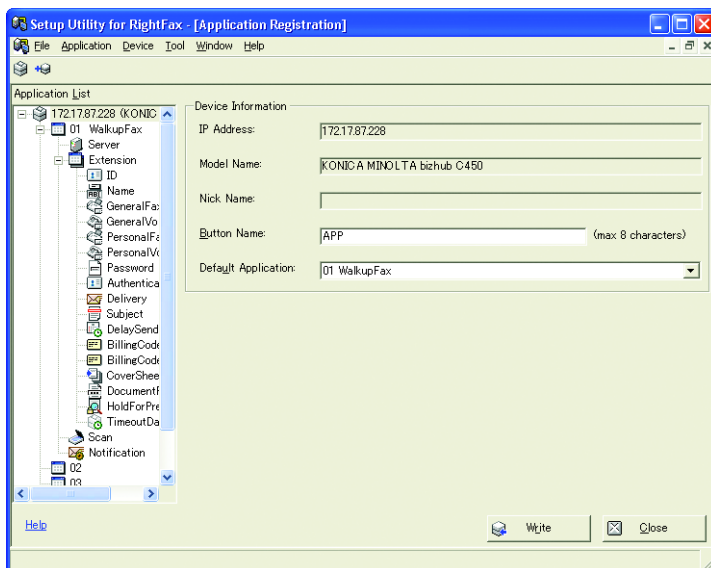
4.10 Saving an application as a file

An application changed in the Setup Utility for RightFax can be saved as a text file in the XML format on your computer.

A saved application file can be read into the Setup Utility for RightFax from the Application Registration window.

To save an application as a file

- 1 Display the Application Registration window.



- For details on displaying the Application Registration window, refer to “Reading an application” on page 4-2.

- 2 On the “File” menu, click “Save File”.

A dialog box appears, allowing the location for saving the application file to be selected.

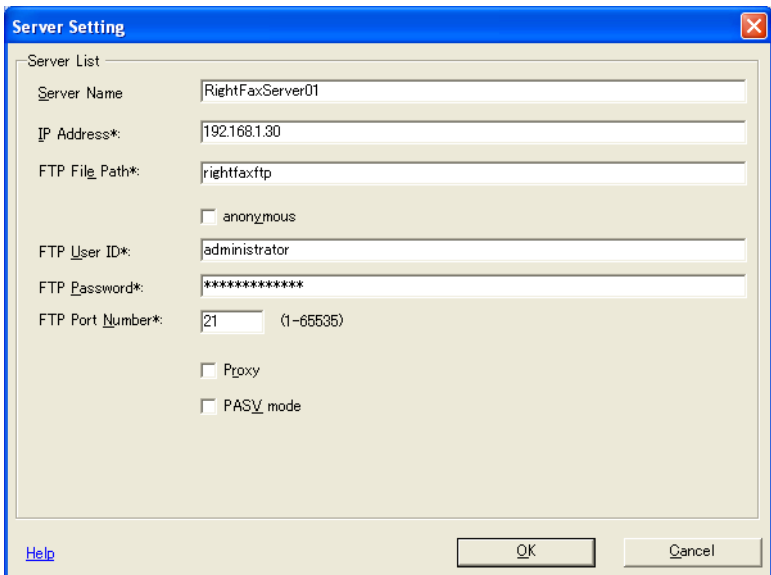
- 3 Specify the save destination and the name of the application file and then click the [Save] button.

The application is saved as a file.

Item Name	Description
Server List	The registered RightFax servers are listed.
[Add] button	Click this button to display the Server Setting dialog box. New RightFax servers can be registered.
[Edit] button	Click this button to display the Server Setting dialog box. The information for the RightFax server selected in the Server List can be changed.
[Delete] button	Click this button to erase the selected RightFax server from the Server List .
[Close] button	Click this button to close the Server List dialog box.

Description of the Server Setting dialog box

Detailed information for a RightFax server can be specified from the Server Setting dialog box.

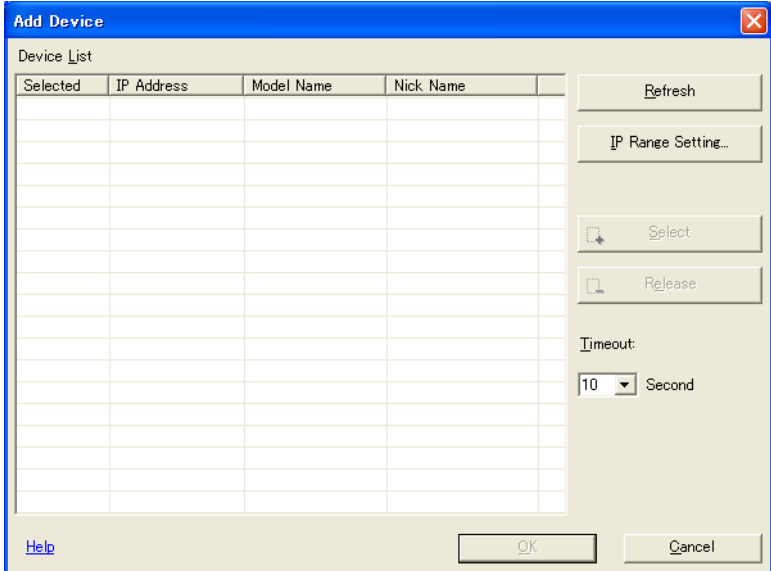


Item Name	Description
Server Name	Specify the name of the RightFax server.
IP Address	Specify the IP address of the RightFax server.
FTP File Path	Specify the path to the FTP destination.

Item Name	Description
"anonymous" check box	Select this check box to connect with the FTP site while logging on as an anonymous user.
FTP User ID	Specify the user ID used with the FTP connection.
FTP Password	Specify the password used with the FTP connection.
FTP Port Number	Specify the port number used with the FTP connection.
"Proxy" check box	Select this check box to communicate with the FTP site using the proxy specified from the multifunctional peripheral.
"PASV mode" check box	Select this check box to communicate with the FTP site using passive mode.
[OK] button	Click this button to save the new settings and close the Server Setting dialog box.
[Cancel] button	Click this button to cancel the changes to the settings and close the Server Setting dialog box.

Description of the Add Device dialog box

Various conditions for searching for multifunctional peripherals on the network can be specified from the Search tab of the Add Device dialog box.



Item	Description
IP Range Setting	Specify the range on the network for automatically searching for multifunctional peripherals.
[Refresh] button	Click this button to search for multifunctional peripherals on the network according to the specified conditions.
“Device List” list	The search results are displayed.
[Select] button	Click this button to register the multifunctional peripheral selected in the Device List with the Setup Utility for RightFax.
[Release] button	Click this button to deselect the multifunctional peripheral in the Device List .
Timeout	Specify the amount of time until the searching for multifunctional peripherals times out.

6.2 Editing multifunctional peripheral information

The information for multifunctional peripherals registered with the Setup Utility for RightFax can be edited.

Display the device information editing dialog box, and then specify the desired settings.

Displaying the Device Information dialog box

- 1 Select a multifunctional peripheral from the **Device List** in the Device Registration dialog box.
- 2 Right-click the selected multifunctional peripheral, and then click “Edit”.

The Device Information dialog box appears.

Description of the Device Information dialog box

The connection information for the multifunctional peripheral can be specified from the Device Information dialog box.

Device Information

Input device registration information

Device's Address:

Model Name:

Registration Name*:

Nickname:

Save Admin Password

Admin password:

Admin password(Retype):

Connection test

Advanced

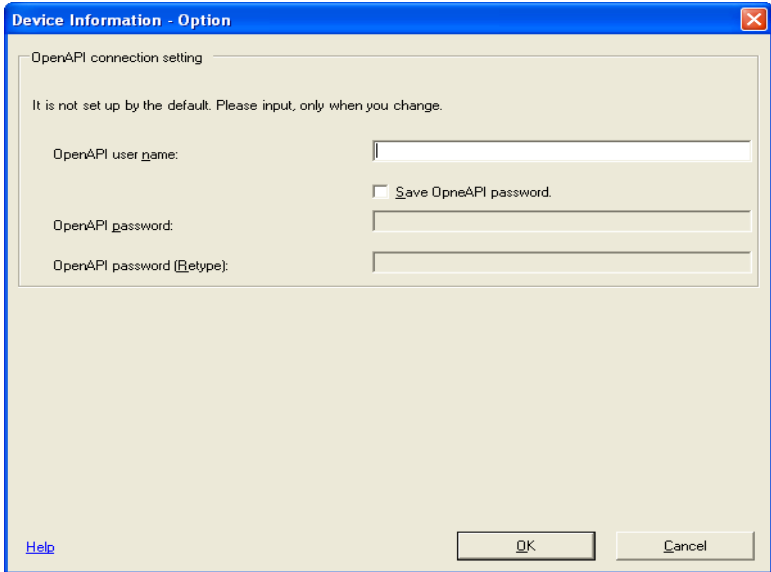
Help OK Cancel

Item	Description
Device's Address	The IP address of the multifunctional peripheral is displayed.
Model Name	The name of the model for the multifunctional peripheral is displayed.
Registration Name	Specify the registration name for the multifunctional peripheral.
Nickname	The nickname (name that is easy to remember) for the multifunctional peripheral is displayed.
"Save Admin Password" check box	Select this check box to save with the Setup Utility for RightFax the password entered in the "Admin Password" box.
Admin password	Type in the password for the administrator of the multifunctional peripheral. A maximum of 64 characters can be entered.
Admin password(Retype)	For confirmation, again type in the password for the administrator of the multifunctional peripheral.
[Connection test] button	Click this button to use the password entered in the "Admin Password" box to try connecting to the multifunctional peripheral.
[Advanced] button	Click this button to display the DeviceInformation - Option dialog box. Specify the detailed settings for connecting to the multifunctional peripheral.
[OK] button	Click this button to save the new settings and close the device information editing dialog box.
[Cancel] button	Click this button to cancel the changes to the settings and close the device information editing dialog box.

Description of the DeviceInformation - Option dialog box

This dialog box appears when the [Advanced] button in the Device Information dialog box is clicked. Specify the OpenAPI settings.

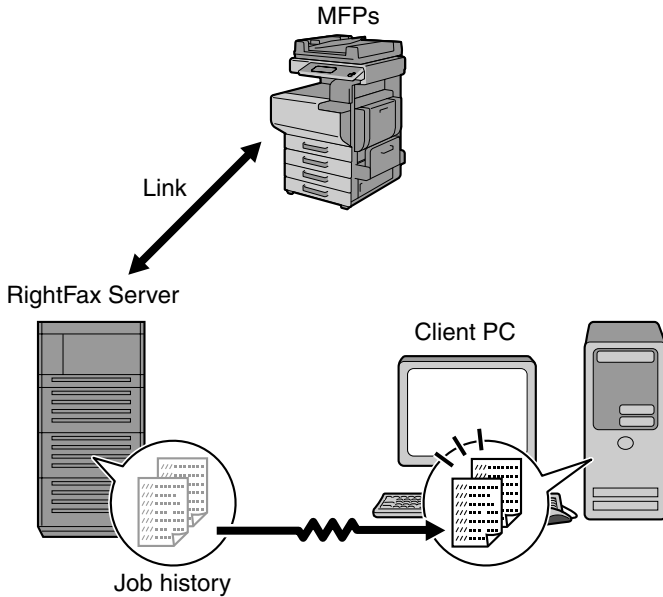
If the OpenAPI settings on the multifunctional peripheral are changed, change the settings in this dialog box to those same settings.



Item		Description
OpenAPI connection setting	OpenAPI user name	Specify the OpenAPI user name. A maximum of 64 characters can be entered.
	"Save OpenAPI password." check box	Select this check box to save the OpenAPI password.
	OpenAPI Password	Specify the OpenAPI password. A maximum of 64 characters can be entered.
	OpenAPI Password (Retype)	For confirmation, type in the OpenAPI password again.
[OK] button		Click this button to save the new settings and close the Device Information-Option dialog box.
[Cancel] button		Click this button to cancel the changes to the settings and close the Device Information-Option dialog box.

7 Retrieving the job history

The RightFax server can be connected to, and the history of jobs sent to the multifunctional peripheral can be retrieved and saved on the computer.

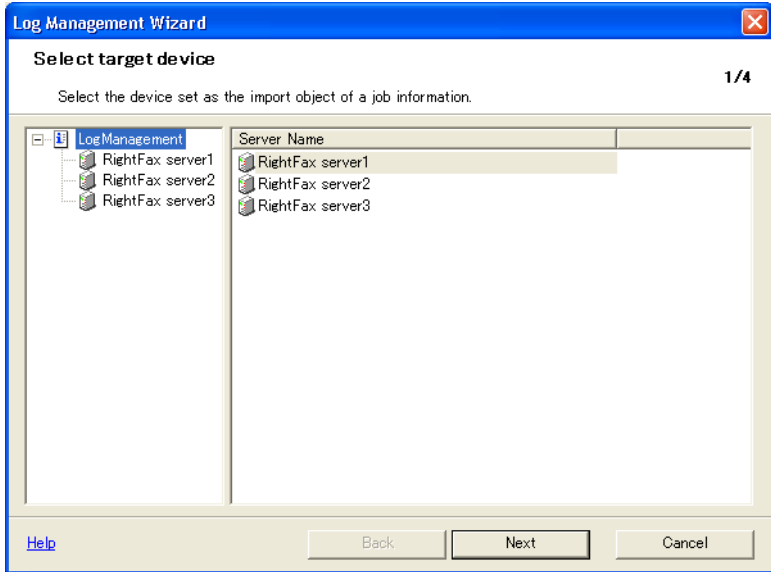


Note

When the job history is retrieved, its file is erased from the RightFax server. When the Log Management Wizard is used, a setting can be specified to leave the job history on the RightFax server.

2 On the “Tool” menu, click “Log Management”.

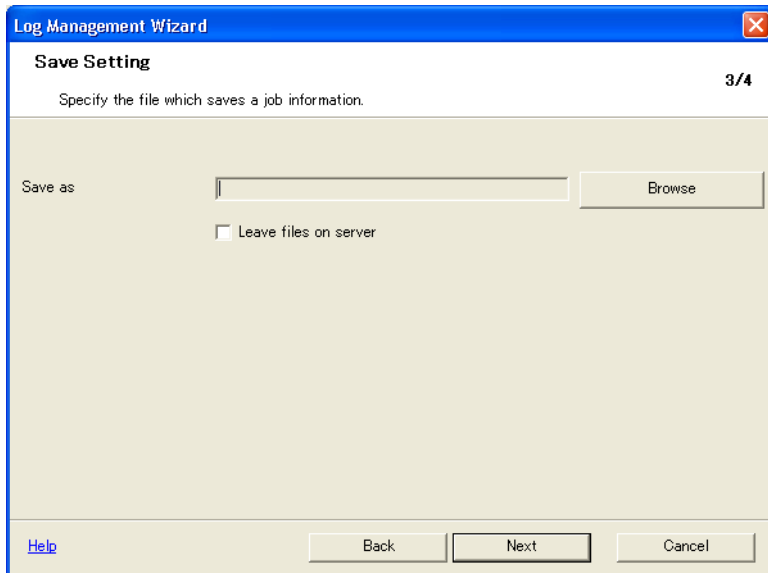
The Log Management Wizard starts up, and a page for selecting the device whose information is to be imported appears.



3 Select the check boxes of the multifunctional peripherals whose job histories are to be retrieved.

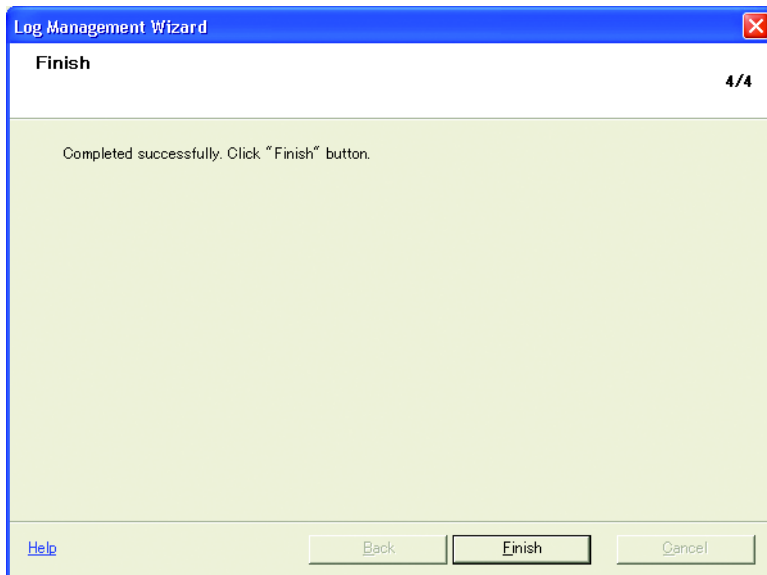
- When a RightFax server is selected on the left side of the page, the multifunctional peripherals linked to the selected RightFax server appears on the right side of the page.
- The check boxes for multiple multifunctional peripherals can be selected.

A page for specifying the location for saving the file appears.



- 6 Click the [Browse] button, and then specify the location for saving the job history file.
- 7 Check the location for saving the job history file, and then click the [Next] button.
 - To leave the job history file on the RightFax server, select the "Leave files on server" check box.

The process for saving the job history file begins. When the file has been saved, a page appears, indicating that the procedure for saving the job history is finished.



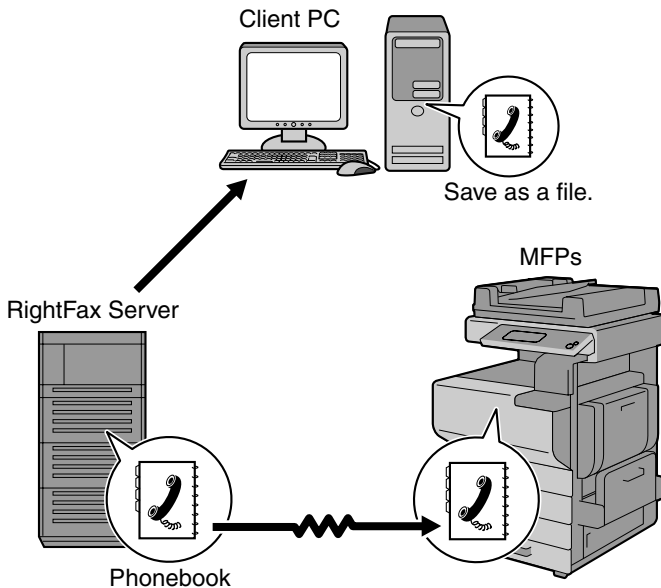
- 8 Click the [Finish] button.

The Log Management Wizard is closed.

The job history could be retrieved from the RightFax server.

8 Writing an address book to a multifunctional peripheral

The RightFax server can be connected to, and the address book saved on the RightFax server can be retrieved. The retrieved address book can be written to a multifunctional peripheral or saved on the computer.

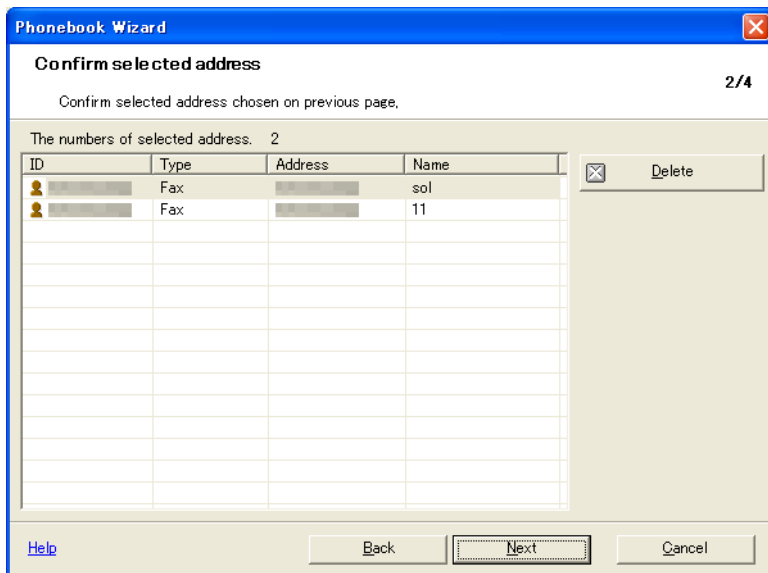


To write an address book to a multifunctional peripheral

- 1 From the Windows Start menu, start the Setup Utility for RightFax.
 - Click the Windows Start button, point to “All Programs”, then “KONICA MINOLTA”, “Setup Utility for RightFax 1.0”, and then click “Setup Utility for RightFax”.

- 3 Select the check boxes for the addresses to be imported.
 - On the left side of the page, select a RightFax server, group, then user. The addresses connected to the selected user appear on the right side of the page.
 - The check boxes for multiple addresses can be selected.
- 4 Click the [Next] button.

A page for confirming the selected addresses appears.



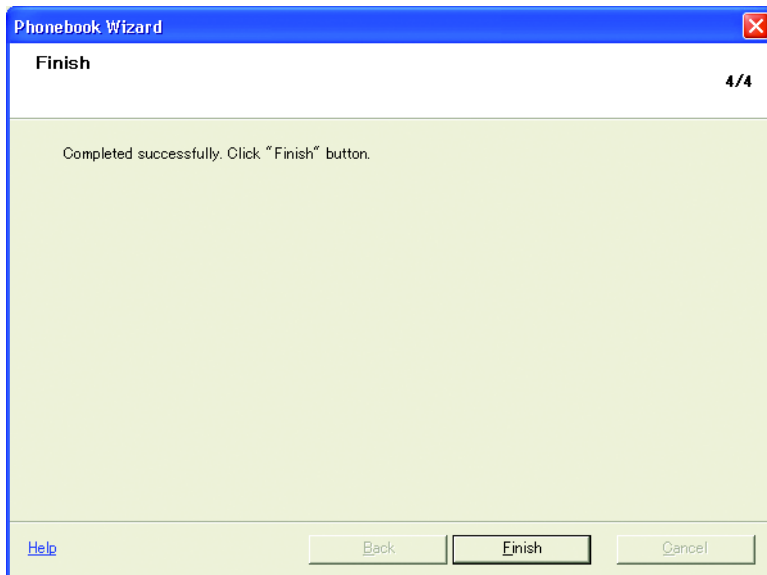
- 5 Check the list of addresses to be saved, and then click the [Next] button.
 - To remove an address from the list, select the address to be removed, and then click the [Delete] button.

A page for selecting the device where the addresses are to be imported appears.

The screenshot shows a dialog box titled "Phonebook Wizard" with a blue header and a red close button. The main title is "Selection of a device" and the progress indicator is "3/4". Below the title, there is a instruction: "Select the device. And click 'Next' button to export address data to the device." The dialog contains several input fields and buttons: "Target device:" with a text box and a "Browse..." button; "Password:" with a text box; a "Save File" checkbox; "Save as:" with a text box and a "Browse..." button; and a footer with "Help", "Back", "Next", and "Cancel" buttons.

- 6 Click the [Browse] button beside "Target device", and then select the multifunctional peripheral where the addresses are to be imported.
 - Multiple multifunctional peripherals can be selected.
 - Type the administrator password (maximum 64 characters) into the "Password" box.
- 7 Check the information beside "Target device", and then click the [Next] button.
 - To save the addresses to a computer, select the "Save File" check box. Click the [Browse] button, and then specify the location where the address file is to be saved.

The process for writing the addresses to the multifunctional peripheral begins. When the data has been written, a page appears, indicating that the procedure for writing the addresses is finished.



- 8 Click the [Finish] button.

The Phonebook Wizard is closed.

The addresses could be written to the multifunctional peripheral from the RightFax server.



KONICA MINOLTA

<http://konicaminolta.com>