



KONICA MINOLTA

# HDD Backup Utility

---

User's Guide

---

# Contents

<b>About this product</b> .....	ii
<b>Trademarks and registered trademarks</b> .....	ii
<b>LICENSE ISSUES</b> .....	iii
<b>1 Introduction</b>	
<b>1.1 System requirements</b> .....	1-1
<b>1.2 Compatible multifunctional products</b> .....	1-1
<b>1.3 Main features</b> .....	1-2
Backing up (saving) .....	1-2
Restoring (recovering) .....	1-2
Wizard operations (program in dialog format) .....	1-2
Access limitations through auto protect .....	1-2
Encoding backup data .....	1-2
<b>1.4 General operation</b> .....	1-3
To back up or restore .....	1-3
<b>2 Installing the HDD Backup Utility</b>	
<b>2.1 Installing</b> .....	2-1
Installation procedure .....	2-1
<b>2.2 Uninstalling</b> .....	2-1
<b>3 Starting up the HDD Backup Utility</b>	
To start up the HDD Backup Utility .....	3-1
<b>3.1 Exiting the HDD Backup Utility</b> .....	3-2
<b>4 Registering the multifunctional product to be backed up</b>	
<b>5 Backing up</b>	
To use the Backup wizard .....	5-3
<b>6 Restoring</b>	
To use the Restore wizard .....	6-3
<b>7 Other Settings</b>	
<b>7.1 HDD Backup Management Option</b> .....	7-1
<b>8 Error message list</b>	

---

## About this product

HDD Backup Utility is, as plug-in of Device Set-Up, used to back up (save) and restore (recover) information on media installed in multifunctional products (MFP) on the network.

## Trademarks and registered trademarks

### Trademark acknowledgements

KONICA MINOLTA and the KONICA MINOLTA logo are either registered trademarks or trademarks of KONICA MINOLTA HOLDINGS, INC.

Microsoft® and Windows® are registered trademarks of Microsoft Corporation in the United States and other countries.

All other company and product names are either trademarks or registered trademarks of their respective companies.

### Dialog boxes

The dialog boxes shown in this manual are those that appear in Windows XP.



...

#### **Note**

*The dialog boxes that appear in this document may differ from those that appear on your computer, depending on the installed devices and specified settings.*



...

#### **Note**

*Unauthorized reproduction, translation or duplication of this document, whether in its entirety or in part, is strictly prohibited.*

*The content of this document is subject to change without notice.*

*Copyright © 2005 KONICA MINOLTA BUSINESS TECHNOLOGIES, INC.  
All rights reserved.*

---

## LICENSE ISSUES

The OpenSSL toolkit stays under a dual license, i.e. both the conditions of the OpenSSL License and the original SSLeay license apply to the toolkit. See below for the actual license texts. Actually both licenses are BSD-style Open Source licenses. In case of any license issues related to OpenSSL please contact [openssl-core@openssl.org](mailto:openssl-core@openssl.org).

### OpenSSL License

Copyright © 1998-2004 The OpenSSL Project. All rights reserved. Redistribution and use in source and binary forms, with or without modification, are permitted provided that the following conditions are met:

1. Redistributions of source code must retain the above copyright notice, this list of conditions and the following disclaimer.
2. Redistributions in binary form must reproduce the above copyright notice, this list of conditions and the following disclaimer in the documentation and/or other materials provided with the distribution.
3. All advertising materials mentioning features or use of this software must display the following acknowledgment:  
“This product includes software developed by the OpenSSL Project for use in the OpenSSL Toolkit. (<http://www.openssl.org/>)”
4. The names “OpenSSL Toolkit” and “OpenSSL Project” must not be used to endorse or promote products derived from this software without prior written permission. For written permission, please contact [openssl-core@openssl.org](mailto:openssl-core@openssl.org).
5. Products derived from this software may not be called “OpenSSL” nor may “OpenSSL” appear in their names without prior written permission of the OpenSSL Project.
6. Redistributions of any form whatsoever must retain the following acknowledgment:  
“This product includes software developed by the OpenSSL Project for use in the OpenSSL Toolkit (<http://www.openssl.org/>)”

THIS SOFTWARE IS PROVIDED BY THE OpenSSL PROJECT “AS IS” AND ANY EXPRESSED OR IMPLIED WARRANTIES, INCLUDING, BUT NOT LIMITED TO, THE IMPLIED WARRANTIES OF MERCHANTABILITY AND FITNESS FOR A PARTICULAR PURPOSE ARE DISCLAIMED. IN NO EVENT SHALL THE OpenSSL PROJECT OR ITS CONTRIBUTORS BE LIABLE FOR ANY DIRECT, INDIRECT, INCIDENTAL, SPECIAL, EXEMPLARY, OR CONSEQUENTIAL DAMAGES (INCLUDING, BUT NOT LIMITED TO, PROCUREMENT OF SUBSTITUTE GOODS OR SERVICES; LOSS OF USE, DATA, OR PROFITS; OR BUSINESS INTERRUPTION) HOWEVER CAUSED AND ON ANY THEORY OF LIABILITY, WHETHER IN CONTRACT, STRICT LIABILITY, OR TORT (INCLUDING NEGLIGENCE OR OTHERWISE) ARISING IN ANY

---

WAY OUT OF THE USE OF THIS SOFTWARE, EVEN IF ADVISED OF THE POSSIBILITY OF SUCH DAMAGE.

This product includes cryptographic software written by Eric Young (eay@cryptsoft.com). This product includes software written by Tim Hudson (tjh@cryptsoft.com).

## Original SSLeay License

Copyright © 1995-1998 Eric Young (eay@cryptsoft.com) All rights reserved.

This package is an SSL implementation written by Eric Young (eay@cryptsoft.com).

The implementation was written so as to conform with Netscapes SSL.

This library is free for commercial and non-commercial use as long as the following conditions are adhered to. The following conditions apply to all code found in this distribution, be it the RC4, RSA, lhash, DES, etc., code; not just the SSL code. The SSL documentation included with this distribution is covered by the same copyright terms except that the holder is Tim Hudson (tjh@cryptsoft.com).

Copyright remains Eric Young's, and as such any Copyright notices in the code are not to be removed.


If this package is used in a product, Eric Young should be given attribution as the author of the parts of the library used.

This can be in the form of a textual message at program startup or in documentation (online or textual) provided with the package.

Redistribution and use in source and binary forms, with or without modification, are permitted provided that the following conditions are met:

1. Redistributions of source code must retain the copyright notice, this list of conditions and the following disclaimer.
2. Redistributions in binary form must reproduce the above copyright notice, this list of conditions and the following disclaimer in the documentation and/or other materials provided with the distribution.
3. All advertising materials mentioning features or use of this software must display the following acknowledgement:  
"This product includes cryptographic software written by Eric Young (eay@cryptsoft.com)"  
The word 'cryptographic' can be left out if the routines from the library being used are not cryptographic related.
4. If you include any Windows specific code (or a derivative thereof) from the apps directory (application code) you must include an acknowledgement:  
"This product includes software written by Tim Hudson (tjh@cryptsoft.com)"

---



THIS SOFTWARE IS PROVIDED BY ERIC YOUNG “AS IS” AND ANY EXPRESS OR IMPLIED WARRANTIES, INCLUDING, BUT NOT LIMITED TO, THE IMPLIED WARRANTIES OF MERCHANTABILITY AND FITNESS FOR A PARTICULAR PURPOSE ARE DISCLAIMED. IN NO EVENT SHALL THE AUTHOR OR CONTRIBUTORS BE LIABLE FOR ANY DIRECT, INDIRECT, INCIDENTAL, SPECIAL, EXEMPLARY, OR CONSEQUENTIAL DAMAGES (INCLUDING, BUT NOT LIMITED TO, PROCUREMENT OF SUBSTITUTE GOODS OR SERVICES; LOSS OF USE, DATA, OR PROFITS; OR BUSINESS INTERRUPTION) HOWEVER CAUSED AND ON ANY THEORY OF LIABILITY, WHETHER IN CONTRACT, STRICT LIABILITY, OR TORT (INCLUDING NEGLIGENCE OR OTHERWISE) ARISING IN ANY WAY OUT OF THE USE OF THIS SOFTWARE, EVEN IF ADVISED OF THE POSSIBILITY OF SUCH DAMAGE.

The licence and distribution terms for any publically available version or derivative of this code cannot be changed. i.e. this code cannot simply be copied and put under another distribution licence [including the GNU Public Licence.]

# 1 Introduction

## 1.1 System requirements

The system requirements for the HDD Backup Utility are described below.

Operating system	Windows XP Professional (SP3 or later) Windows XP Professional x64 Edition (SP2 or later) Windows Vista Enterprise (SP2 or later)* Windows Vista Business (SP2 or later)* Windows Vista Ultimate (SP2 or later)* Windows 7 Enterprise (SP1 or later)* Windows 7 Professional (SP1 or later)* Windows 7 Ultimate (SP1 or later)* * 32-bit(x86) and 64-bit(x64) editions are supported.
Computer	According to the recommended system requirements of your operating system.
Memory	According to the recommended system requirements of your operating system.
Network	Computer with TCP/IP protocol settings correctly specified
Web browser	Microsoft Internet Explorer 6.0 (SP1) or later
Library	Microsoft .NET Framework 2.0 (SP2 or later) <Windows XP> Microsoft .NET Framework 3.5 (SP1 or later) <Windows Vista> * The edition of .NET Framework required for this software is pre-installed on Windows 7.
Hard disk	20 MB or more of available space (Additional space is required to save the backed up data.)
Monitor	Resolution: 800 × 600 or more 16-bit color or more

Refer to the Readme file for the latest information about service packs and so on.

## 1.2 Compatible multifunctional products



### Note

*For information on whether or not your multifunctional product is compatible with HDD Backup Utility, refer to Readme.*

## 1.3 Main features

### Backing up (saving)

Data on the media (data storage device) installed in the multifunctional product can be backed up onto your computer.

### Restoring (recovering)

The backed up data can be restored (recovered) from your computer to the original media installed in the multifunctional product.



#### **Reminder**

*Data can only be restored onto multifunctional products that have been backed up.*

### Wizard operations (program in dialog format)

Backup and restoration operations can easily be performed using the wizards (programs in dialog format).

### Access limitations through auto protect

A password can be specified to limit access to HDD Backup Utility.

Refer to Device Set-Up User's Guide for more information about auto protect function.

### Encoding backup data

If a password is specified and data is backed up, the backup data is encoded.



## 1.4 General operation

The following operations must be performed in order to use the HDD Backup Utility to back up or restore the data for the multifunctional product.

### To back up or restore

The HDD Backup Utility is an application used by administrators of multifunctional products. The HDD Backup Utility should be used by the administrator of the multifunctional product to back up or restore the data.

- 1** Install the HDD Backup Utility onto the computer.
  - → “Installing the HDD Backup Utility” on page 2-1
- 2** Start up HDD Backup Utility.
  - → “Starting up the HDD Backup Utility” on page 3-1
- 3** Register the multifunctional product to be backed up.
  - Refer to “Device Set-Up User’s Guide”.
- 4** Back up the data from the media installed in the registered multifunctional product.
  - → “Backing up” on page 5-1
- 5** If desired, restore (recover) the data to the media of the multifunctional product.
  - → “Restoring” on page 6-1

## 2 Installing the HDD Backup Utility

### 2.1 Installing

Install the HDD Backup Utility onto your computer.



...

**Note**

*Before installing the utility, be sure to log in with Administrator privileges.*

*When the Device Set-up is not installed, the Device Set-up installer is activated. Be sure, first of all, to install the Device Set-up.*

*When the version is upgraded from V1.1 to V.1.2, the setting of the location into which report files are saved is discontinued.*

**Installation procedure**

- 1 Start up the installer (setup.exe).
- 2 Follow the instructions that appear to complete the installation.

### 2.2 Uninstalling

The HDD Backup Utility can be uninstalled using either of the following two methods.

- Using “Add or Remove Programs”
- Using setup.exe again



...

**Note**

*Before uninstalling, exit the HDD Backup Utility.*

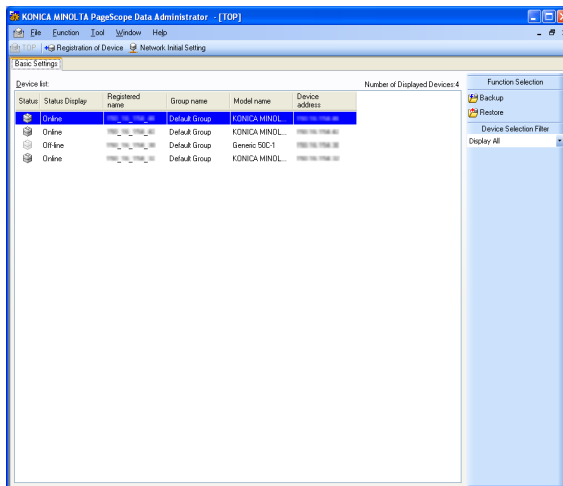
*Please note that the use of the HDD Backup Utility becomes unavailable if the Device Set-Up is uninstalled with the HDD Backup Utility installed. On an occasion like this, reinstall it with the installer of the HDD Backup Utility to install the Device Set-Up.*

## 3 Starting up the HDD Backup Utility

### To start up the HDD Backup Utility

- From the Windows [Start] menu, start the HDD Backup Utility.
  - Click the Windows [Start], point to [All Programs], then [KONICA MINOLTA], and then click [HDD Backup Utility] - [HDD Backup Utility].
  - When HDD Backup Utility is first started, the dialog box for specifying the default auto protect settings appears. Refer to Device Set-Up User's Guide for more information about auto protect setting.

The main window appears.



#### Detail

Refer to “Device Set-Up User’s Guide” for more information about main window.

### 3.1 Exiting the HDD Backup Utility

Follow the procedure described below to exit the HDD Backup Utility.

- In the main window, click [Exit] on the [File] menu.
- In the main window, click the button with the “x” at the upper right of the window/dialog box.
- Shut down or log off from the computer.

## 4 Registering the multifunctional product to be backed up

When using the HDD Backup Utility, it is necessary to make a search for a supported device on the network for registration.

As a method for the search/registration of a supported device, the following are available.

- Method for searching a supported device on the network
- Method for searching a supported device with the IP address specified.
- Method for registering a supported device from the Function access restriction file



### **Detail**

*For details of the method for search/registration of the supported device, refer to the user's guide of the Device Set-Up.*

## 5 Backing up

Data on the media (data storage device) installed in the multifunctional product can be backed up onto your computer.

The backup operation is performed after the Backup wizard is started and the necessary settings have been specified.



...

### Note

*Only auxiliary data storage devices connected directly to your computer can be selected to store the backup data. In addition, data cannot be backed up on optical media, such as CD-R and DVD-R.*



...

### Reminder

*The auxiliary data storage device into which the backup data is to be saved must have the more amount of free space available than the maximum amount of space on the media to be backed up. This is not the total size of the data saved on the media. For the maximum amount of space on the media installed on the multifunctional product, refer to the User's Guide for the multifunctional product.*



...

### Reminder

*The backup operation cannot be performed if the multifunctional product to be backed up is being operated or is in Administrator mode.*



...

### Reminder

*Never turn off the multifunctional product being backed up while the backup operation is being performed.*



...

### Note

*Depending on the size of the media to be backed up, the backup operation may take more than ten hours.*



...

**Reminder**

*While the backup operation is being performed, the control panel of the multifunctional product is locked and cannot be used. In addition, the multifunctional product will automatically be restarted when the backup operation is finished.*



...

**Reminder**

*If the firmware of the multifunctional product has been changed, then it may not be possible to restore to the changed multifunctional product backup data that has been created using the previous firmware.*

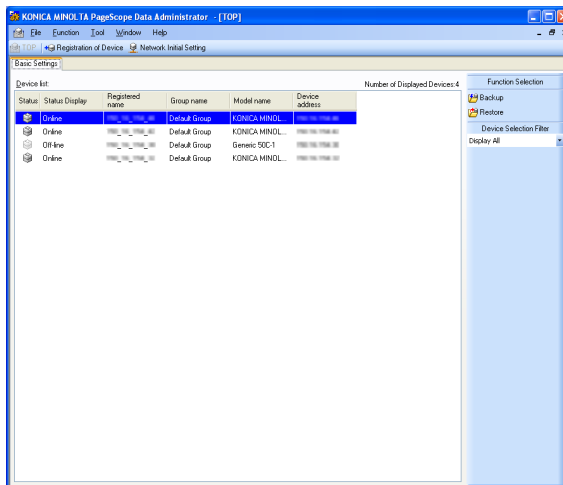
*After updating the firmware of the multifunctional product, we recommend performing the backup operation again.*

## To use the Backup wizard

Before using the Backup wizard, check for the following.

- ✓ Windows is logged on to with Administrator privileges.
- ✓ The administrator password for the multifunctional product to be backed up is available.
- ✓ The amount of space available on the auxiliary data storage device where the backup data is to be saved is greater than the maximum amount of space on the media to be backed up.
- ✓ The multifunctional product to be backed up is not being operated.
- ✓ The multifunctional product to be backed up is not in Administrator mode.
- ✓ The multifunctional product to be backed up is registered with the HDD Backup Utility.

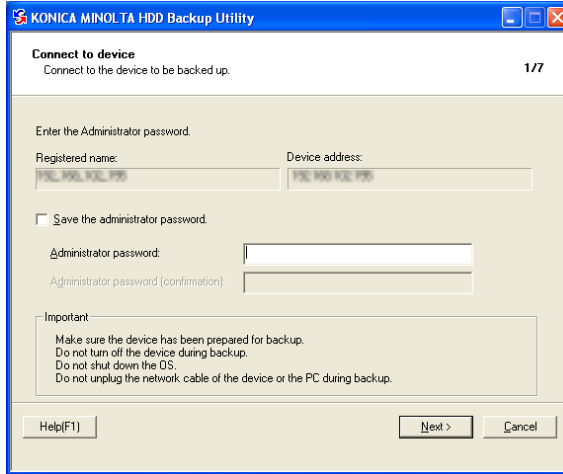
- 1 From the Windows [Start] menu, start the HDD Backup Utility.
- 2 Select the device to be backed up from the list and select [Backup] from Function Selection field.



- Alternatively, select [Backup] from the [Function] menu.

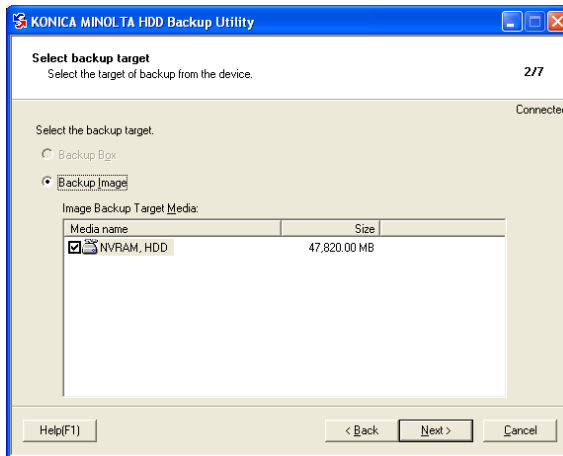


### 3 Click [Next].



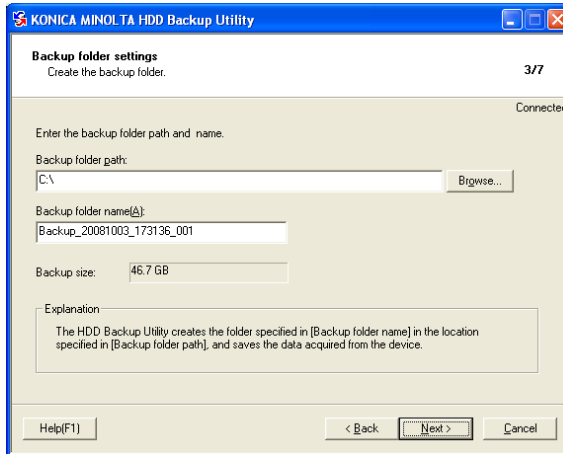
- Enter the administrator password as necessary.

### 4 Select the backup type and media, and click [Next].



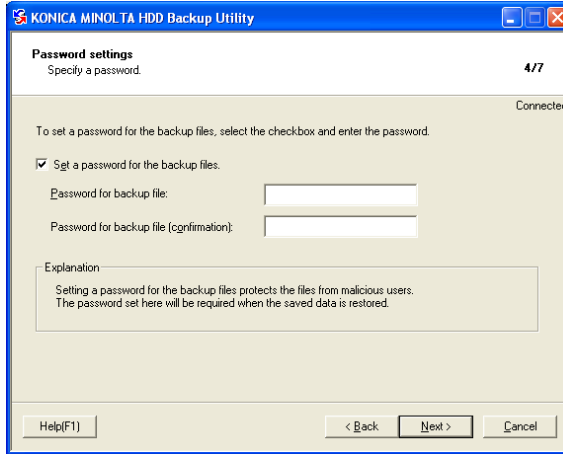
- The "Backup Box" or "Backup Image" type may not be selected depending on a device.

- 5 Specify the location into which the backup files are saved and the folder name, and then click [Next].



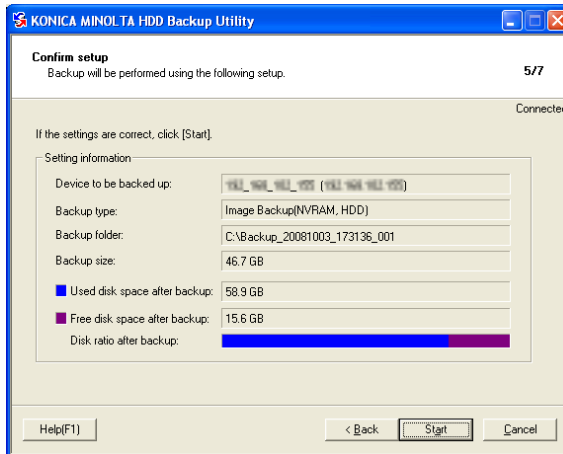
- Click [Browse] to specify the location into which the backup files are saved.
- Data can only be backed up on auxiliary data storage devices connected directly to your computer. In addition, data cannot be backed up on optical media, such as CD-R and DVD-R.
- The path to the location specified in the [Backup folder path] box must contain 180 characters or less.
- As a default, the name of the backup folder is specified as “Backup\_<date>\_<time>\_<number\_in\_series>”.
- The backup folder name can contain up to 50 characters. However, the following characters cannot be used. \ / : \* ? “ < > |

- 6 When setting a password for the backup files, put a check mark at [Set a password for the backup files] to set a password and then click [Next].



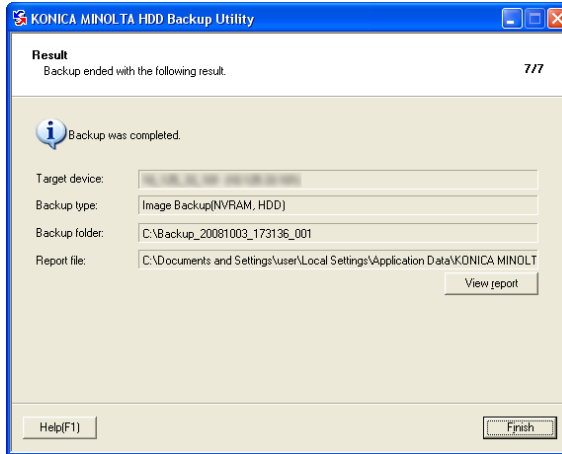
- Be careful not to lose the password that is specified. If the password is lost, the data cannot be restored.
- If the [Set a password for the backup files.] check box is cleared, a password does not need to be typed in. However, if a password is not specified, the backup file is not encoded.
- The first 64 characters of the entered text are used as a password.

- 7 Click [Start].



- To change the specified settings, click the [Back], and then specify the settings again.
- If the [Cancel] is clicked to cancel the backup operation before it has been completed, all partially created backup data is erased.

8 Click the [Finish].



- If the [View Report] is clicked, the report file (in text format) is displayed so that the details of the backup can be checked. The Backup wizard closes, and the main window is displayed again.

This completes the backup operation.

## 6 Restoring

The data backed up from the media in the multifunctional product can be restored (recovered) to the multifunctional product from your computer.

The restoration operation is performed after the Restore wizard is started and the necessary settings have been specified.



...

**Reminder**

*Data can only be restored to the multifunctional product specified during the backup operation.*



...

**Reminder**

*The data on the media in the multifunctional product is overwritten when the restoration operation is performed.*



...

**Reminder**

*The data to be restored must have been saved on an auxiliary data storage device connected directly to your computer.*



...

**Reminder**

*Never turn off the multifunctional product whose data is being restored while the restoration operation is being performed.*



...

**Note**

*The restoration operation cannot be performed if the multifunctional product to be restored is being operated or is in Administrator mode.*



...

**Note**

*Depending on the size of the media to be backed up, the restoration operation may take more than ten hours.*



...

**Note**

*The multifunctional product will automatically be restarted when the restoration operation is finished.*



...

**Reminder**

*If the firmware of the multifunctional product has been changed, then it may not be possible to restore to the changed multifunctional product backup data that has been created using the previous firmware.*

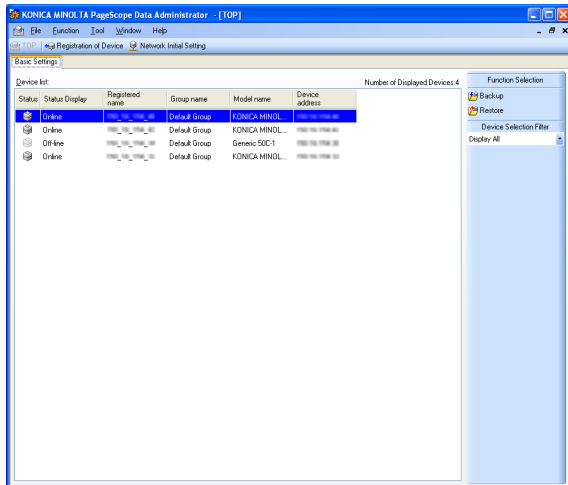
*After updating the firmware of the multifunctional product, we recommend performing the backup operation again.*

## To use the Restore wizard

Before using the Restore wizard, check for the following.

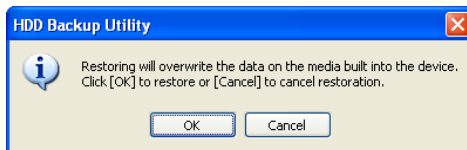
- ✓ Windows is logged on to with Administrator privileges.
- ✓ The administrator password for the multifunctional product whose data is to be restored is available.
- ✓ The multifunctional product to be restored is not being operated.
- ✓ The multifunctional product to be restored is not in Administrator mode.

- 1 From the Windows [Start] menu, start the HDD Backup Utility.
- 2 Select the device to be restored from the list and select [Restore] from Function Selection field.

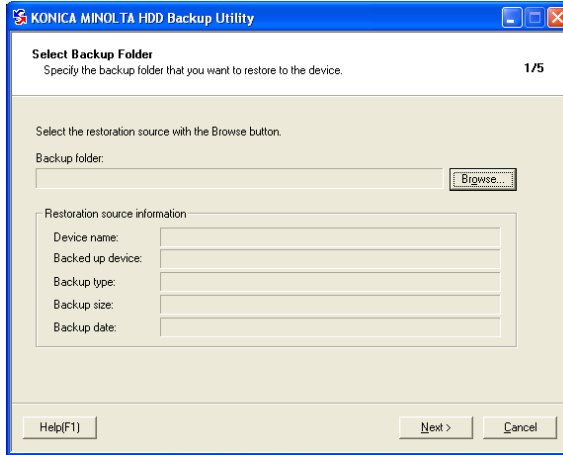


- Alternatively, select [Restore] from the [Function] menu.

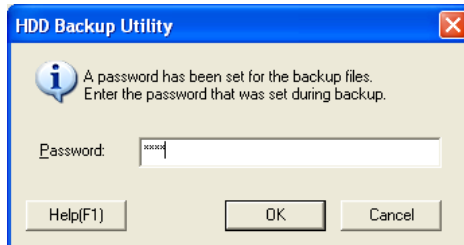
- 3 When the confirmation message is displayed, click [OK].



- 4 Click the [Browse], and then select the data to be restored.



- 5 If a password has been set for the selected data, enter the password, and click [OK].



- 6 Click [Next].



## 7 Enter the administrator password and click [Next].

**KONICA MINOLTA HDD Backup Utility**

**Connect to device**  
Connect to the device to be restored. 2/5

Enter the Administrator password.

Registered name: \_\_\_\_\_ Device address: \_\_\_\_\_

Save the administrator password.

Administrator password: \_\_\_\_\_  
Administrator password (confirmation): \_\_\_\_\_

**Important**  
Make sure the device has been prepared for restoration.  
Do not turn off the device during restoration.  
Do not shut down the OS.  
Do not unplug the network cable of the device or the PC during restoration.

Help(F1) < Back Next > Cancel

## 8 Check the specified settings, and then click [Start].

**KONICA MINOLTA HDD Backup Utility**

**Confirm setup**  
The backup files will be restored to the device using the following settings. 3/5

Connected (SSL Secured)

If the settings are correct, click [Start].

Restoration information:

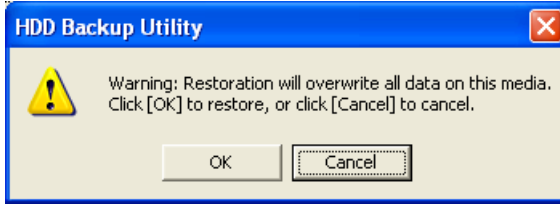
Target device: \_\_\_\_\_

Restoration source information:

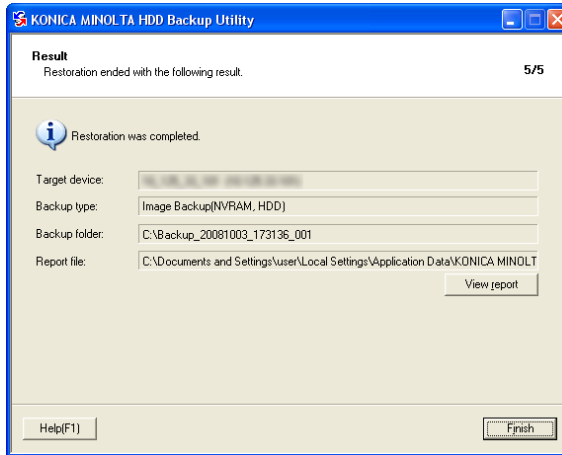
Backup type: Image Backup(NVRAM, HDD)  
Backup folder: C:\Backup\_20081003\_173136\_001  
Backup size: 46.7 GB

Help(F1) < Back Start Cancel

- 9 When the confirmation message is displayed, click [OK].



- 10 Click the [Finish].



- If the [View Report] is clicked, the report file is displayed (in text format) so that the details of the restoration can be checked.

The Restore wizard closes, and the main window is displayed again.

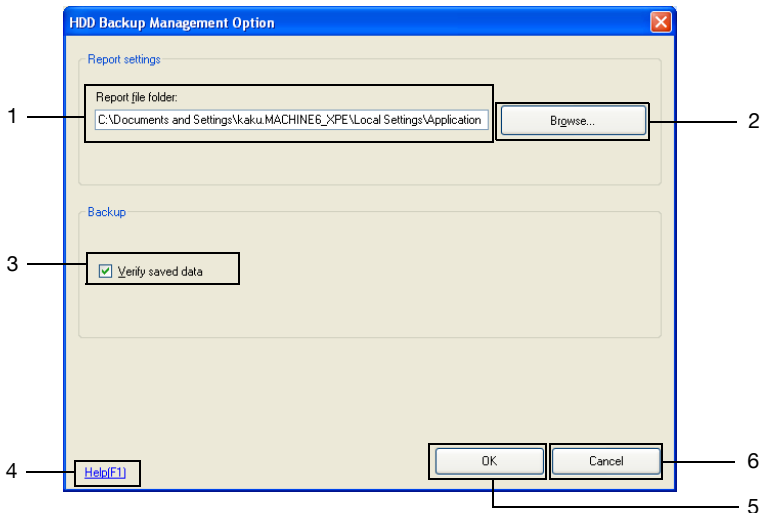
This completes the restoration operation.

## 7 Other Settings

For the HDD Backup Utility, the change of the following settings can be made in the HDD Backup Management Option screen.

### 7.1 HDD Backup Management Option

Selecting [Option]-[HDD Backup Management Option] from the [Tool] menu in the Main window displays the screen as shown below.



No.	Item Name	Description
1	Report file folder	The backup and restoration information is saved as a report file in text format.
2	[Browse] button	Specify the location where this report file is to be saved. Displays a dialog box for selecting the folder for saving the report file.
3	Verify saved data	If this check box is selected, the integrity of the original data and the saved backup data will be verified while backing up.
4	[Help] button	Displays the online Help.
5	[OK] button	Applies the changes to the settings, and displays the main window again.
6	[Cancel] button	Displays the main window again without saving the changes to the settings.

## 8 Error message list

An error message may appear while HDD Backup Utility is being used.

An error code appears after the message describing the error.



The corrective measures for the various error codes are described below. Follow the described procedure.

Error Code Number	Remedy
101-102	Check the registration name.
105-107, 130	Check the device address.
131-134	Check the TCP socket port number.
113-117, 220-221, 301-302	Check the location where the report file is to be saved.
201-207, 216-217	Check the location where the backup file is to be saved.
208-213	Check the name of the backup folder.
121, 218-219, 303-304, 306-307, 509-510, 512-513, 563, 615	Change the device or utility settings, and then try again.
110, 125	The HDD Backup Utility V1.2 cannot be used on this operating system.
108-109, 111-112, 154, 157, 181	The HDD Backup Utility V1.2 is not set correctly. Reinstall it.
122-124, 215, 305, 408, 530, 601-605	Insufficient memory. Exit unnecessary applications.
118-120	Create a link to the file's application.
407, 410, 413, 414, 537-541	The device is not compatible with the HDD Backup Utility V1.2.
214	The device is not installed with media that can be backed up or restored.
560	The backed up device is different from the device being restored.
557, 610-612, 624-625	The backup data is incorrect or corrupted. Select correctly saved backup data, and try again.

Error Code Number	Remedy
1000-8799	Communication with the device was not performed properly. Wait a while, and then try again.
401-403, 405-406, 409, 411-412, 415, 501-503, 505, 507, 515-529, 531-536, 542, 548-553, 555-556, 558-559, 561, 606-609, 613-614, 616-623, 626-638, 704-706, 801, 8801, 8803-9999	The operation was not performed properly. Try again.
182, 404, 514, 554, 562	Contact the administrator.
183, 511	Wait a while, and then try again.
504, 543-547, 701-703	Since there is either a problem with the operating system or changes have been made, some HDD Backup Utility V1.2 functions cannot be used. In order to use all functions, re-install the operating system or try correcting the problem.
8802	Take action as an administrator.
150-152	Check the auto protect settings.
149, 153	The password for canceling the auto protect settings is incorrect. Check that Caps Lock is not applied, and then try again.



**KONICA MINOLTA**

<http://konicaminolta.com>